

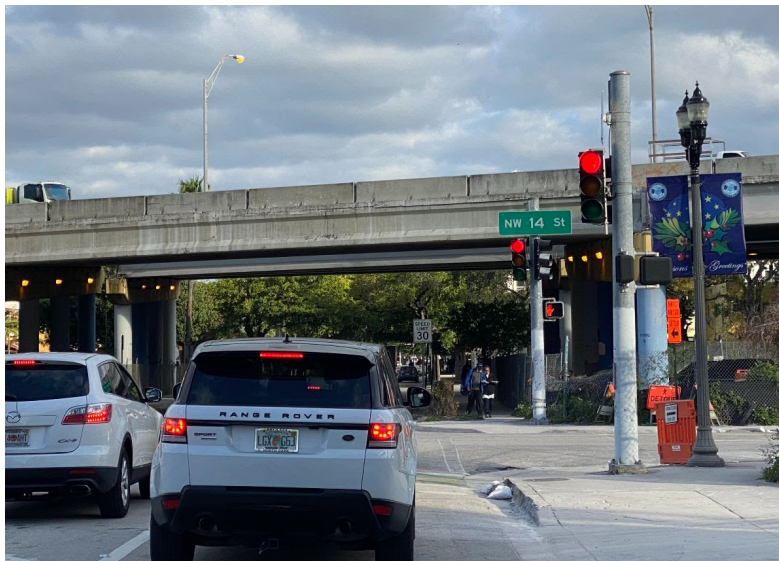
I-395/SR 836/I-95 DESIGN-BUILD PROJECT

Financial Project Numbers: 251688-1-52-01, 423126-1-52-01, 423126-2-52-01, 429300-2-52-01

12-23-2020

WEEKLY PROJECT UPDATE

TRAFFIC SIGNAL MODIFICATION AT THE INTERSECTION OF NW 14 STREET AND NW 3 AVENUE



The traffic signals at the intersection of NW 14 Street and NW 3 Avenue have been moved from being mounted in an overhead position to being mounted on poles at all four corners as shown in the picture above. On Wednesday, December 23, there will be single lane closures on NW 3 Avenue and NW 14 Street at the intersection, between the hours of 10 p.m. and 5:30 a.m. Drivers will be flagged around the work area. The closures will allow the contractor to install reflective back plates on the traffic signal heads.

Continue reading on the next page...

I-95 ONGOING CONSTRUCTION ACTIVITIES

- Concrete pavement replacement on I-95 from NW 8 Street to NW 29 Street
- Ongoing replacement of bridge approach slabs on I-95 from NW 8 Street to NW 29 Street

I-95 CLOSURES

- **SUNDAY, JANUARY 3 THROUGH FRIDAY, JANUARY 8** - Up to four lanes on southbound I-95 from NW 29 Street to NW 8 Street will be closed nightly between the hours of 9 p.m. and 5:30 a.m. The closure on Friday will occur between the hours of 11 p.m. and 11 a.m.
- **SUNDAY, JANUARY 3 THROUGH FRIDAY, JANUARY 8** - Up to four lanes on northbound I-95 will be closed nightly from NW 8 Street to NW 29 Street between the hours of 9 p.m. and 5:30 a.m. The closure on Friday will occur between the hours of 11 p.m. and 11 a.m.

DIVERSION OF NORTHBOUND I-95 TRAFFIC TO EXIT 4A

- **SUNDAY, JANUARY 3 THROUGH FRIDAY, JANUARY 8** - All three travel lanes on northbound I-95 will be closed just north of SR 836 between the hours of 10 p.m. and 6 a.m. on Sunday through Thursday, and between the hours of 11 p.m. and 8 a.m. on Friday. Drivers traveling on northbound I-95 will be diverted to the eastbound I-195 ramp (Exit 4A) just after SR 836 to reconnect with northbound I-95 at approximately NW 23 Street.

TO VIEW A MAP OF THE TRAFFIC DIVERSION PLEASE [CLICK HERE](#).

SOUTHBOUND I-95 RAMP TO EASTBOUND I-395 DETOUR

- **SUNDAY, JANUARY 3 THROUGH FRIDAY, JANUARY 8** - The southbound I-95 ramp to eastbound I-395 will be closed as needed between the hours of 9 p.m. and 5:30 a.m. Drivers can:
 - Continue south on I-95, exit at the NW 8 Street (Exit 3B)
 - Turn left on NW 8 Street, continue east on NW 8 Street
 - Turn left at Biscayne Boulevard to access the A1A North/Miami Beach Ramp

TO VIEW A MAP OF THE DETOUR PLEASE [CLICK HERE](#).

Continue reading on the next page...

SOUTHBOUND I-95 RAMP TO NW 8 STREET DETOUR

- **SUNDAY, JANUARY 3 THROUGH FRIDAY, JANUARY 8** - The southbound I-95 ramp to NW 8 Street will be closed between the hours of 9 p.m. and 5:30 a.m. Drivers can:
 - Continue south on I-95, then exit at the SW 7 Street/Brickell Avenue (Exit 1B) ramp
 - Turn left on SW 8 Street, then turn left on SW 2 Avenue
 - Continue north on SW/NW 2 Avenue to connect with NW 8 Street

TO VIEW A MAP OF THE DETOUR PLEASE [CLICK HERE](#).

Continue reading on the next page...

I-395 ONGOING CONSTRUCTION ACTIVITIES

- Nighttime Auger Cast Pile (ACP) operations east of Biscayne Boulevard and south of NE 13 Street will resume on Monday, January 4
- Ongoing seal slab work and dewatering of center pile footer
- Construction of bridge foundations and piers adjacent to I-395 from North Bayshore Drive to NW 3 Avenue
- Placement of bridge segment west of NE 1 Avenue just north of I-395

I-395 MAINLINE LANE CLOSURES

- **SUNDAY, JANUARY 3 THROUGH FRIDAY, JANUARY 8** - One lane on mainline eastbound I-395 will be closed from I-95 to Biscayne Boulevard between the hours of 10 p.m. and 5:30 a.m.
- **SUNDAY, JANUARY 3 THROUGH FRIDAY, JANUARY 8** - One lane on mainline westbound I-395 will be closed from I-95 to Biscayne Boulevard between the hours of 10 p.m. and 5:30 a.m.

LONG TERM CLOSURE OF NW 1 PLACE

- NW 1 Place will remain continuously closed until further notice from NW 13 Street to NW 14 Street. The long-term closure is necessary to allow the contractor to safely continue the construction of the new I-395 bridges. NW 1 Court is an alternate route.

TO VIEW A MAP OF THE DETOUR PLEASE [CLICK HERE](#).

Continue reading on the next page...

SR 836 ONGOING CONSTRUCTION ACTIVITIES

- Ongoing ACP operations between NW South River Drive and NW 17 Avenue
- Foundation construction in the median area of SR 836 between NW 17 Avenue and the toll gantry
- Foundation construction adjacent to NW 7 Avenue between NW 14 Street and NW 15 Street
- Roadway widening activities from NW 10 Avenue to I-95
- Widening activities at the eastbound SR 836 ramp to northbound I-95
- Ongoing casting of bridge caps

SR 836 LANE CLOSURES

- **SUNDAY, JANUARY 3 THROUGH FRIDAY, JANUARY 8** - Two lanes on eastbound SR 836 from NW 17 Avenue to I-95 will be closed between the hours of 9 p.m. and 5:30 a.m. The closure on Friday will be implemented between the hours of 11 p.m. and 7 a.m.
- **SUNDAY, JANUARY 3 THROUGH FRIDAY, JANUARY 8** - Two westbound lanes on SR 836 from I-95 to NW 17 Avenue will be closed between the hours of 9 p.m. and 5:30 a.m. The closure on Friday will be implemented between the hours of 11 p.m. and 7 a.m.

NORTHBOUND NW 12 AVENUE RAMP TO EASTBOUND SR 836 DETOUR

- **SUNDAY, JANUARY 3 THROUGH FRIDAY, JANUARY 8** - The northbound NW 12 Avenue ramp to eastbound SR 836 will be closed between the hours of 9 p.m. and 5:30 a.m. Drivers can:
 - Continue north on NW 12 Avenue, then turn left on NW 12 Street
 - Turn right on NW 13 Avenue, then turn right on NW 14 Street
 - Turn right on NW 12 Avenue to access the southbound NW 12 Avenue entrance ramp to SR 836 east.

TO VIEW A MAP OF THE DETOUR PLEASE [CLICK HERE](#).

Continue reading on the next page...

EASTBOUND SR 836 RAMP TO NORTHBOUND I-95 DETOUR

- **SUNDAY, JANUARY 3 THROUGH FRIDAY, JANUARY 8** - The eastbound SR 836 ramp to northbound I-95 will be closed between the hours of 9 p.m. and 5:30 a.m. Drivers can:
 - Continue east on I-395
 - Exit at NE 2 Avenue/Biscayne Boulevard (Exit 2A)
 - Turn right on NE 2 Avenue, then turn right on NE 11 Street
 - Turn right on NE 1 Avenue to access the I-95 north ramp

TO VIEW A MAP OF THE DETOUR PLEASE [CLICK HERE](#).

EASTBOUND SR 836 RAMP TO SOUTHBOUND I-95 DETOUR

- **SUNDAY, JANUARY 3 THROUGH FRIDAY, JANUARY 8** - The eastbound SR 836 ramp to southbound I-95 will be closed between the hours of 9 p.m. and 5:30 a.m. Drivers can:
 - Access the ramp to NW 8 Street
 - Continue south on NW 3 Court to access the I-95 south ramp after NW 2 Street

TO VIEW A MAP OF THE DETOUR PLEASE [CLICK HERE](#).

NW 7 AVENUE LANE CLOSURES

- **SUNDAY, JANUARY 3 THROUGH FRIDAY, JANUARY 8** - Two southbound lanes on NW 7 Avenue will be closed from NW 14 Street to NW 15 Street between the hours of 8 a.m. and 3:30 p.m. Drivers will be diverted to the median lane until they clear the work zone.

NW 17 AVENUE RAMP TO WESTBOUND SR 836

- **SUNDAY, JANUARY 3 THROUGH FRIDAY, JANUARY 8** - The northbound NW 17 Avenue ramp to westbound SR 836 will be closed between the hours of 9 p.m. and 5:30 a.m. Drivers on NW 17 Avenue going west on SR 836 can:
 - Go west on NW 7 Street
 - Turn right on NW 27 Avenue to access the westbound SR 836 ramp

TO VIEW A MAP OF THE DETOUR PLEASE [CLICK HERE](#).

Continue reading on the next page...

ABOUT THE PROJECT

The I-395/SR 836/I-95 Design-Build Project will add capacity, enhance the flow of traffic and safety and improve access along I-395, SR 836 and I-95.



CLICK ON THE LINK TO LEARN MORE ABOUT THE PROJECT:

<http://www.i395-miami.com/project-video>

Please note that this schedule may change due to bad weather or other unforeseen conditions.

The work is part of the I-395/SR 836/I-95 Design-Build Project that will reconstruct the I-395 corridor from the SR 836/I-395/I-95 (Midtown) Interchange to the MacArthur Causeway Bridge, including the construction of a Signature Bridge over NE 2 Avenue and Biscayne Boulevard; double-deck SR 836 from west of NW 17 Avenue to the Midtown Interchange and the replacement of the concrete pavement on I-95 from NW 8 Street to NW 29 Street.

For additional information on the test pile work or the project please contact Oscar Gonzalez at 786-280-0983 or via email at ogonzalez@mrgmiami.com. Additional project information can be found on the project website, www.I-395miami.com.

For information on scheduled lane closures on FDOT Construction Projects that affect traffic to/from and in Miami Beach, please [click here](#).