

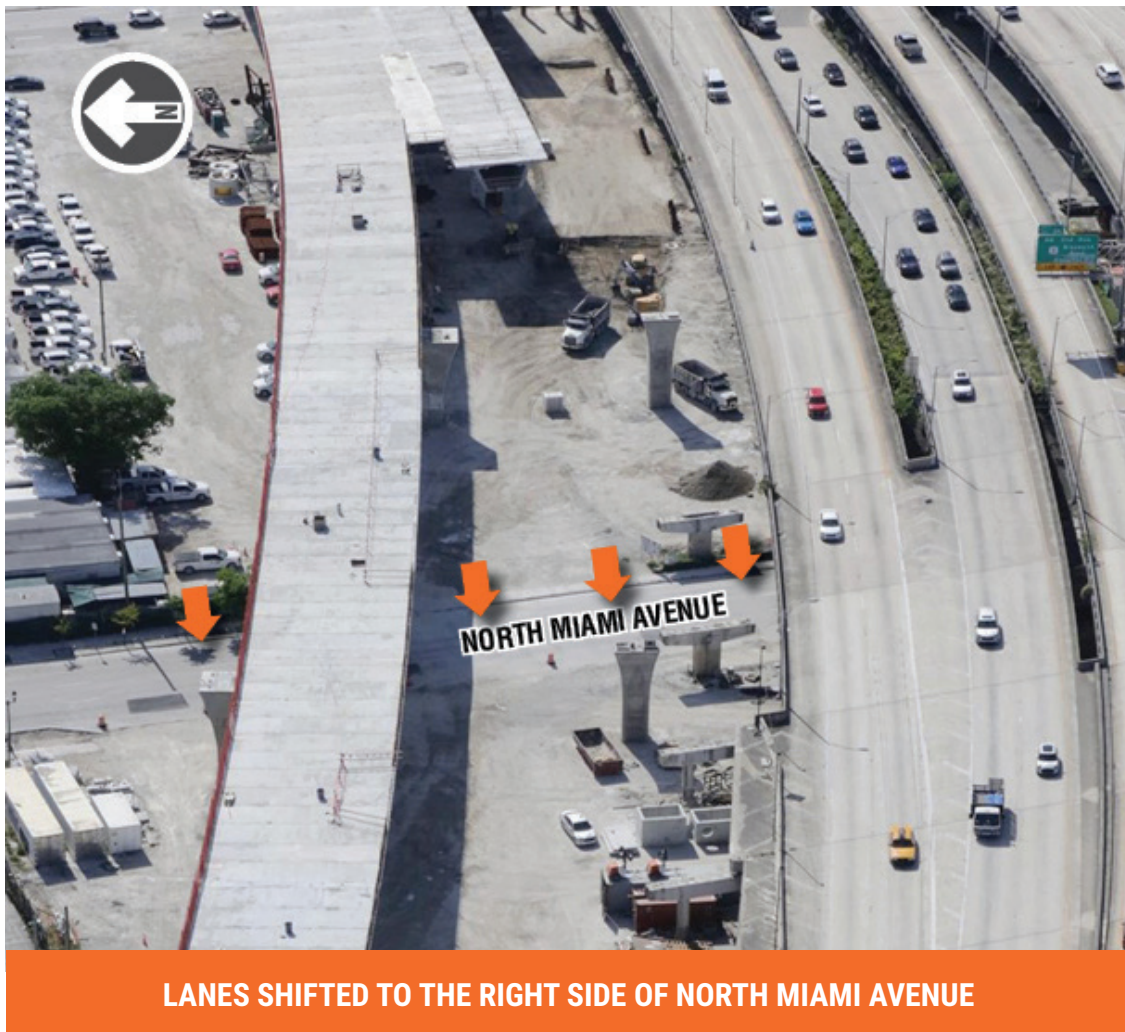
I-395/SR 836/I-95 DESIGN-BUILD PROJECT

Financial Project Numbers: 251688-1-52-01, 423126-1-52-01, 423126-2-52-01, 429300-2-52-01

6-17-2021

RESCHEDULED: TRAFFIC SHIFT ON NORTH MIAMI AVENUE

- On **FRIDAY MORNING, JUNE 18**, all North Miami Avenue travel lanes will be shifted to the right side of the roadway from NW 13 Street to just north of NW 11 Terrace as **shown below**. In order to complete the traffic shift, two lanes on North Miami Avenue will be closed from NW 14 Street to NW 11 Terrace on **THURSDAY, JUNE 17** between the hours of 11 p.m. to 5:30 a.m.



Continue reading on the next page...

ABOUT THE PROJECT

The I-395/SR 836/I-95 Design-Build Project will add capacity, enhance the flow of traffic and safety and improve access along I-395, SR 836 and I-95.



To view a video of the project,
please visit:
I395-miami.com/project-video

Please note that this schedule may change due to bad weather or other unforeseen conditions.

The work is part of the I-395/SR 836/I-95 Design-Build Project that will reconstruct the I-395 corridor from the SR 836/I-395/I-95 (Midtown) Interchange to the MacArthur Causeway Bridge, including the construction of a Signature Bridge over NE 2 Avenue and Biscayne Boulevard; double-deck SR 836 from west of NW 17 Avenue to the Midtown Interchange and the replacement of the concrete pavement on I-95 from NW 8 Street to NW 29 Street.

For additional information on the test pile work or the project please contact Oscar Gonzalez at 786-280-0983 or via email at ogonzalez@mrgmiami.com. Additional project information can be found on the project website, www.I-395miami.com.

For information on scheduled lane closures on FDOT Construction Projects that affect traffic to/from and in Miami Beach, please [click here](#).