



I-395/SR 836/I-95 DESIGN-BUILD PROJECT

Financial Project Numbers: 251688-1-52-01, 423126-1-52-01, 423126-2-52-01, 429300-2-52-01

02-09-2022

WEEKLY PROJECT UPDATE

I-95 ONGOING CONSTRUCTION ACTIVITIES

- Nighttime concrete pavement replacement on I-95 from NW 8 Street to NW 29 Street
- Laser profile testing to ensure smooth concrete driving surface
- Nighttime replacement of bridge approach slabs on I-95 from NW 8 Street to NW 29 Street
- Installation of Intelligent Transportation System devices
- Installation of new guardrail
- Bridge foundation work, including concrete pile driving just east of I-95 adjacent to NW 17 Street and under the core of the interchange
- Ongoing concrete grinding operations on I-95

I-95 LANE CLOSURES

- **WEDNESDAY, FEBRUARY 9 THROUGH FRIDAY, FEBRUARY 11 AND SUNDAY, FEBRUARY 13 THROUGH FRIDAY, FEBRUARY 18** - Up to two lanes on southbound I-95 from NW 29 Street to NW 8 Street will be closed between the hours of 9 p.m. and 5:30 a.m. The closures on Fridays will occur between the hours of 11 p.m. and 11 a.m.
- **WEDNESDAY, FEBRUARY 9 THROUGH FRIDAY, FEBRUARY 11 AND SUNDAY, FEBRUARY 13 THROUGH FRIDAY, FEBRUARY 18** - Up to two lanes on northbound I-95 will be closed nightly from NW 8 Street to NW 29 Street between the hours of 9 p.m. and 5:30 a.m. The closures on Fridays will occur between the hours of 11 p.m. and 11 a.m.

NW 17 STREET DAYTIME LANE CLOSURE UNDER I-95

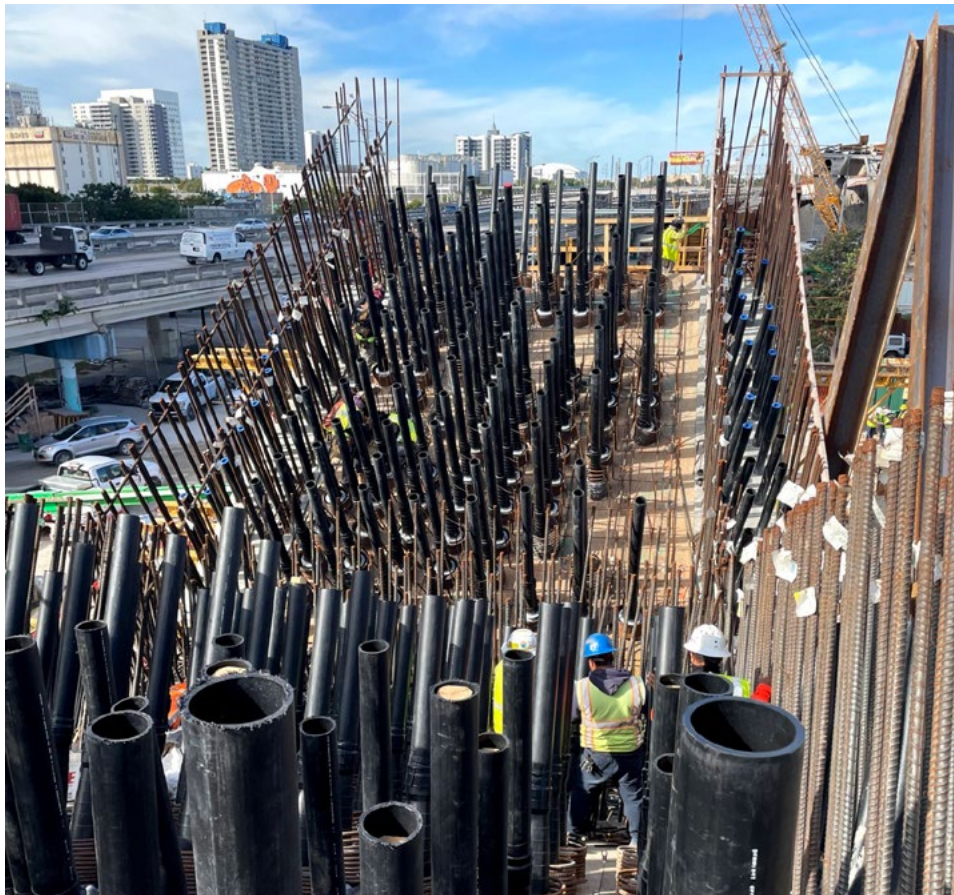
- **WEDNESDAY, FEBRUARY 9 THROUGH FRIDAY, FEBRUARY 11 AND MONDAY, FEBRUARY 14 THROUGH FRIDAY, FEBRUARY 18** - One travel lane on NW 17 Street under I-95 will be closed as needed between the hours of 9 a.m. and 3:30 p.m. Drivers can use NW 20 Street as an alternate route.

Continue reading on the next page...

NW 17 STREET NIGHTTIME FULL CLOSURE UNDER I-95

- **MONDAY, FEBRUARY 14 THROUGH FRIDAY, FEBRUARY 18** - All travel lanes on NW 17 Street under I-95 will be closed between the hours of 9 p.m. and 5:30 a.m. to allow the contractor to work on the bridge over the roadway. One travel lane will also be closed as needed between the hours of 9 a.m. and 3:30 p.m. Drivers can use NW 20 Street as an alternate route.

I-395 ONGOING CONSTRUCTION ACTIVITIES



East to west view of the center pier cap showing post tensioning ducts for the east and west leg

- Construction of a temporary westbound I-395 bypass from just west of NE 1 Avenue to North Miami Avenue
- Driving concrete piles into the ground just north of I-395 between NW 3 Avenue and NW 7 Avenue
- Construction of bridge piers at the Overtown Plaza alleyway between NW 3 Avenue and NW 4 Avenue
- Erection of bridge segments west of NW 1 Place

Continue reading on the next page...

- Foundation construction for signature bridge arches 1 and 2 located north of I-395 and just west of NE 2 Avenue
- Excavation of signature bridge arch 5 east of Biscayne Boulevard adjacent to NE 13 Street
- Hammering/driving of steel pipes and sheets into the ground adjacent to I-395 from NE 2 Avenue to I-95
- Construction of the arch pier legs at the signature bridge center pier foundation located between Biscayne Boulevard and NE 2 Avenue just north of I-395
- Construction of bridge foundations and piers adjacent to I-395 from North Bayshore Drive to west of NW 3 Avenue
- Placement of bridge segments west of NW 1 Court south of I-395
- Construction of new entrance ramp to westbound I-395 just west of North Miami Avenue
- Nighttime roadway operations on I-395 from MacArthur Causeway to I-95

I-395 MAINLINE LANE CLOSURES

- **WEDNESDAY, FEBRUARY 9 THROUGH FRIDAY, FEBRUARY 11 AND SUNDAY, FEBRUARY 13 THROUGH FRIDAY, FEBRUARY 18** - One lane on mainline eastbound I-395 will be closed from I-95 to Biscayne Boulevard between the hours of 10 p.m. and 5:30 a.m.
- **WEDNESDAY, FEBRUARY 9 THROUGH FRIDAY, FEBRUARY 11 AND SUNDAY, FEBRUARY 13 THROUGH FRIDAY, FEBRUARY 18** - One lane on mainline westbound I-395 will be closed from Biscayne Boulevard to I-95 between the hours of 10 p.m. and 5:30 a.m.

WESTBOUND I-395 RAMP TO NORTHBOUND I-95 DETOUR

- **THURSDAY, FEBRUARY 10 AND FRIDAY, FEBRUARY 11** - The westbound I-395 ramp to northbound I-95 will be closed between the hours of 10 p.m. and 5:30 a.m. on Thursday and between the hours of 11:45 p.m. and 5:30 a.m. on Friday. Drivers can:
 - Access the southbound I-95 ramp
 - Exit at SW 7 Street/Brickell Avenue (Exit 1B), then turn left at SW 8 Street
 - Enter the northbound I-95 ramp, then continue north on I-95

TO VIEW A MAP OF THE DETOUR PLEASE [CLICK HERE](#)

LANE CLOSURES ON BISCAYNE BOULEVARD

- **WEDNESDAY, FEBRUARY 9 THROUGH FRIDAY, FEBRUARY 11** - Two northbound lanes on Biscayne Boulevard from NE 11 Terrace to NE 13 Street will be closed between the hours of 10 p.m. and 5:30 a.m. for drainage work.

Continue reading on the next page...

NIGHTTIME CLOSURE OF THE NW 3 AVENUE/ NW 14 STREET INTERSECTION

- **FRIDAY, FEBRUARY 11** - The NW 3 Avenue/NW 14 Street intersection will be closed between the hours of 10 p.m. and 5:30 a.m.

Northbound drivers on NW 3 Avenue can:

- Turn right on NW 13 Street, then turn left on NW 2 Avenue
- Turn right on NW 14 Street, then turn left on NW 1 Avenue
- Turn left on NW 16 Street to connect with NW 3 Avenue

Southbound drivers on NW 3 Avenue can:

- Turn left on NW 16 Street, then turn right on NW 2 Avenue
- Turn left on NW 15 Street, then turn right on NW 1 Avenue
- Turn left on NW 14 Street, then turn right on North Miami Avenue
- Turn right on NW 11 Street to connect with NW 3 Avenue

Eastbound drivers on NW 14 Street can:

- Turn left on NW 7 Avenue, then turn right on NW 17 Street
- Turn right on NW 1 Avenue to connect with NW 14 Street

Westbound drivers on NW 14 Street can:

- Turn right on NW 1 Avenue, then turn left on NW 17 Street
- Turn left on NW 7 Avenue to connect with NW 14 Street

TO VIEW A MAP OF THE DETOUR PLEASE [CLICK HERE](#)

CLOSURE OF NW 14 STREET NW 1 PLACE TO NW 3 AVENUE

- **FRIDAY, FEBRUARY 11** - NW 14 street will be closed as needed from NW 3 Avenue to NW 1 Place between the hours of 10 p.m. and 5:30 a.m. Drivers should follow the posted detour route. Daytime single lane closures will be implemented as needed between the hours of 9 a.m. and 3:30 p.m.

Continue reading on the next page...

LONG-TERM CLOSURE OF NW 1 PLACE

- NW 1 Place from NW 13 Street to NW 14 Street will remain continuously closed until further notice to allow the contractor to work on bridges over the roadways.

TO VIEW A MAP OF THE DETOUR PLEASE [CLICK HERE](#)

CLOSURE OF NW 14 TERRACE

- NW 14 Terrace will be closed from NW 3 Avenue to NW 2 Avenue until further notice to allow the contractor to construct bridge foundations. Drivers can use NW 15 Street as an alternate.

CLOSURE OF NW 13 STREET AT NW 1 COURT

- A section of NW 13 Street at NW 1 Court will be closed until further notice. The closure will allow the contractor to construct bridge caps for the new I-395 bridges.

TO VIEW A MAP OF THE DETOUR PLEASE [CLICK HERE](#)

LONG-TERM CLOSURE OF NW 1 COURT

- NW 1 Court from NW 13 Street to NW 14 Street and NW 13 Street from NW 1 Avenue to NW 1 Court will remain continuously closed until further notice to allow the contractor to work on bridges over the roadways.

TO VIEW A MAP OF THE DETOUR PLEASE [CLICK HERE](#)

Continue reading on the next page...

SR 836 ONGOING CONSTRUCTION ACTIVITIES



Nighttime concrete pavement replacement at the SR 836/I-395 ramps to northbound I-95

- Ongoing widening activities for the eastbound SR 836 ramp to northbound I-95
- Ongoing concrete bridge deck pours for the widening of the eastbound SR 836 to northbound I-95 ramp
- Erection of bridge pier caps using the main support beam lifter on SR 836 median just west of NW 17 Avenue (**NIGHTTIME FULL CLOSURES OF SR 836 WILL BE IMPLEMENTED AS NEEDED**)
- Bridge widening activities on eastbound SR 836 over NW 14 Street and NW 10 Avenue
- Nighttime hydro-demolition of SR 836 bridge sections between NW 12 Avenue and I-95
- Foundation construction just west of the Miami River under SR 836 in the Grove Park neighborhood
- Daytime driving of steel sheets into the ground under SR 836 from the Miami River to NW 17 Avenue
- Driving steel sheets into the ground adjacent to SR 836 from NW 7 Avenue to NW 17 Avenue
- Pier construction in the median area of SR 836 between NW 17 Avenue and the toll gantry and just east of NW 17 Avenue
- Foundation construction at the Richard E. Gerstein Justice Building parking area
- Foundation construction east of NW 17 Avenue and under SR 836
- Ongoing casting of bridge caps

Continue reading on the next page...

FULL CLOSURE OF SR 836

Two travel lanes on eastbound and westbound SR 836 will be closed at 9 p.m., and all travel lanes will be closed from NW 17 Avenue to NW 12 Avenue as noted below:

- **WEDNESDAY, FEBRUARY 9** - All eastbound travel lanes will be closed from 10:30 p.m. to 5:30 a.m., and all westbound travel lanes will close from 11:45 p.m. to 6 a.m.
- **THURSDAY, FEBRUARY 17** – All eastbound travel lanes will be closed from 10 p.m. to 5:30 a.m., and all westbound travel lanes will close from 10:30 p.m. to 6 a.m.
Drivers on westbound SR 836 can:
 - Exit at the NW 12 Avenue ramp, then turn left on NW 12 Avenue
 - Turn right on NW 7 Street
 - Turn right on NW 17 Avenue to connect with the westbound SR 836 rampDrivers on eastbound SR 836 can:
 - Exit at the NW 17 Avenue South (Ballpark) ramp, then turn right at NW 17 Avenue
 - Turn left at NW 7 Street
 - Turn left at NW 12 Avenue to connect with eastbound SR 836 ramp

TO VIEW A MAP OF THE DETOUR PLEASE [CLICK HERE](#)

SR 836 LANE CLOSURES

- **WEDNESDAY, FEBRUARY 9 THROUGH FRIDAY, FEBRUARY 11 AND MONDAY, FEBRUARY 14 THROUGH FRIDAY, FEBRUARY 18** - Up to two lanes on eastbound SR 836 from NW 17 Avenue to I-95 will be closed as needed between the hours of 9 p.m. and 5:30 a.m.
- **WEDNESDAY, FEBRUARY 9 THROUGH FRIDAY, FEBRUARY 11 AND MONDAY, FEBRUARY 14 THROUGH FRIDAY, FEBRUARY 18** - Up to two westbound lanes on SR 836 from I-95 to NW 17 Avenue will be closed as needed between the hours of 9 p.m. and 5:30 a.m.

EASTBOUND SR 836 RAMP TO NORTHBOUND I-95 DETOUR

- **WEDNESDAY, FEBRUARY 9 THROUGH FRIDAY, FEBRUARY 11 AND MONDAY, FEBRUARY 14 THROUGH FRIDAY, FEBRUARY 18** - The eastbound SR 836 ramp to northbound I-95 will be closed between the hours of 9 p.m. and 5:30 a.m. Drivers can:
 - Access the southbound I-95/NW 8 Street ramp, then exit at the NW 8 Street/PortMiami ramp
 - Turn left at NW 8 Street
 - Turn left at NW 3 Avenue to access the northbound I-95 ramp

TO VIEW A MAP OF THE DETOUR PLEASE [CLICK HERE](#)

Continue reading on the next page...

EASTBOUND SR 836 RAMP TO SOUTHBOUND I-95 DETOUR

- **WEDNESDAY, FEBRUARY 16 AND THURSDAY, FEBRUARY 17** - The eastbound SR 836 ramp to southbound I-95 will be closed between the hours of 10 p.m. and 5:30 a.m. Drivers can:
 - Continue east on I-395
 - Exit at NE 2 Avenue/Biscayne Boulevard (Exit 2A)
 - Turn right on NE 2 Avenue, then turn right on NE 11 Street
 - Turn right on NE 1 Avenue to access the I-95 south ramp

TO VIEW A MAP OF THE DETOUR PLEASE [CLICK HERE](#)

NOTE: THE EASTBOUND SR 836 RAMP TO SOUTHBOUND RAMP WILL NOT BE CLOSED AT THE SAME TIME AS THE RAMP TO NORTHBOUND I-95

NORTHBOUND NW 12 AVENUE RAMP TO EASTBOUND SR 836 DETOUR

- **TUESDAY, FEBRUARY 15** - The northbound NW 12 Avenue ramp to eastbound SR 836 will be closed between the hours of 10 p.m. and 5:30 a.m. Drivers can:
 - Continue north on NW 12 Avenue, then turn left on NW 12 Street
 - Turn right on NW 13 Avenue, then turn right on NW 14 Street
 - Turn right on NW 12 Avenue to access the southbound NW 12 Avenue entrance ramp to SR 836 east

TO VIEW A MAP OF THE DETOUR PLEASE [CLICK HERE](#)

SOUTHBOUND NW 12 AVENUE RAMP TO EASTBOUND SR 836 DETOUR

- **TUESDAY, FEBRUARY 15 AND WEDNESDAY, FEBRUARY 16** - The southbound NW 12 Avenue ramp to eastbound SR 836 will be closed as needed between the hours of 9 p.m. and 5:30 a.m. Drivers can:
 - Turn right on NW 14 Street
 - Turn left on NW 14 Avenue and continue along NW 11 Street
 - Turn left on NW 12 Avenue to access the SR 836 east entrance ramp

TO VIEW A MAP OF THE DETOUR PLEASE [CLICK HERE](#)

NOTE: THE NW 12 AVENUE RAMPS WILL NOT BE CLOSED AT THE SAME TIME. THE CLOSURES WILL BE STAGGERED.

Continue reading on the next page...

NW 14 STREET CLOSURE

- **MONDAY, FEBRUARY 14 THROUGH FRIDAY, FEBRUARY 18** - NW 14 Street will be closed as needed from NW 7 Avenue to NW 10 Avenue between the hours of 9 p.m. and 5:30 a.m.

Drivers on westbound NW 14 Street can:

- Turn right on NW 7 Avenue, then turn left on NW 17 Street
- Turn left on NW 9 Avenue and follow NW 10 Avenue to connect with NW 14 Street

Drivers on eastbound NW 14 Street can:

- Turn left on NW 10 Avenue and follow NW 9 Avenue, then turn right on NW 17 Street
- Turn right on NW 7 Avenue to connect with NW 14 Street

TO VIEW A MAP OF THE DETOUR PLEASE [CLICK HERE](#).

NW 10 AVENUE DETOUR

- **WEDNESDAY, FEBRUARY 9 THROUGH FRIDAY, FEBRUARY 11** - NW 10 Avenue will be closed as needed from NW 13 Street to NW 14 Street starting between the hours of 9 p.m. and 5:30 a.m.

Northbound drivers on NW 10 Avenue can:

- Go east on NW 13 Street
- Turn left on NW 8 Avenue
- Turn left on NW 14 Street to connect with NW 10 Avenue

Southbound drivers on NW 10 Avenue can:

- Go east on NW 14 Street
- Turn right on NW 8 Court
- Turn right on NW 13 Street to access NW 10 Avenue

TO VIEW A MAP OF THE DETOUR PLEASE [CLICK HERE](#).

NW NORTH RIVER DRIVE/NW 11 STREET LANE CLOSURES

- **WEDNESDAY, FEBRUARY 9 THROUGH FRIDAY, FEBRUARY 11 AND MONDAY, FEBRUARY 14 THROUGH FRIDAY, FEBRUARY 18** - One NW North River Drive southbound lane will be closed from NW 12 Street and NW 13 Avenue as needed between the hours of 9 a.m. and 3:30 p.m. and 6 p.m. and 5 a.m.

Continue reading on the next page...

ABOUT THE PROJECT

The I-395/SR 836/I-95 Design-Build Project will add capacity, enhance the flow of traffic and safety and improve access along I-395, SR 836 and I-95.



To view a video of the project,
please visit:
i395-miami.com/project-video



To view updated project photos,
please visit:
i395-miami.com/construction-photos

Please note that this schedule may change due to bad weather or other unforeseen conditions.

The work is part of the I-395/SR 836/I-95 Design-Build Project that will reconstruct the I-395 corridor from the SR 836/I-395/I-95 (Midtown) Interchange to the MacArthur Causeway Bridge, including the construction of a Signature Bridge over NE 2 Avenue and Biscayne Boulevard; double-deck SR 836 from west of NW 17 Avenue to the Midtown Interchange and the replacement of the concrete pavement on I-95 from NW 8 Street to NW 29 Street.

For additional information on the project please contact Oscar Gonzalez at 786-280-0983 or via email at ogonzalez@mrgmiami.com. Additional project information can be found on the project website, www.i-395miami.com.

For information on scheduled lane closures on FDOT Construction Projects that affect traffic to/from and in Miami Beach, please [click here](#).