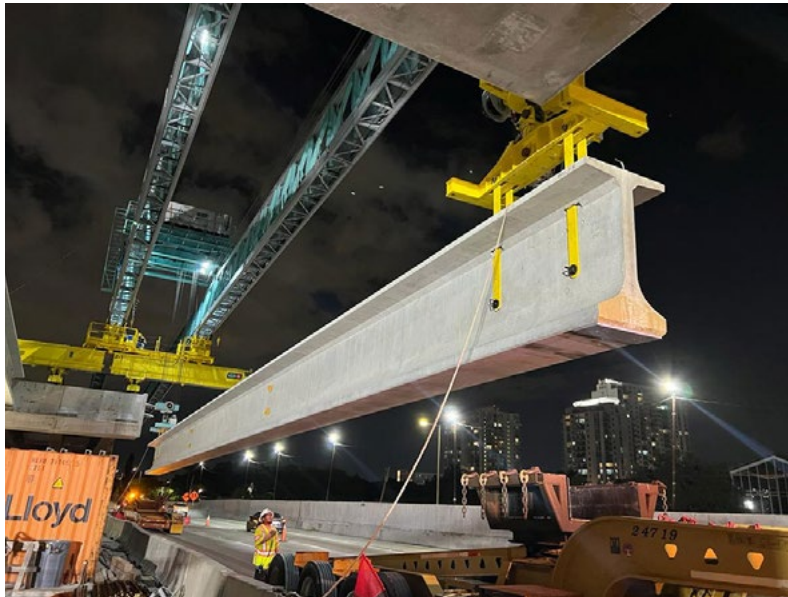


I-395/SR 836/I-95 DESIGN-BUILD PROJECT

Financial Project Numbers: 251688-1-52-01, 423126-1-52-01, 423126-2-52-01, 429300-2-52-01

10-04-2022

FULL CLOSURE OF SR 836



Erection of bridge beam for the new SR 836 doubled decked roadway west of NW 17 Avenue

- **WEDNESDAY, OCTOBER 5 (THURSDAY, OCTOBER 6 IS AN ALTERNATE DATE)** - All eastbound and westbound SR 836 lanes will be closed from NW 17 Avenue to NW 12 Avenue between the hours of 11:30 p.m. and 5:30 a.m.
 - Drivers on eastbound SR 836 can:
 - Exit at the NW 17 Avenue South (Ballpark) ramp, then turn right at NW 17 Avenue
 - Turn left at NW 7 Street
 - Turn left at NW 12 Avenue to connect with eastbound SR 836 ramp
 - Drivers on westbound SR 836 can:
 - Exit at the NW 12 Avenue ramp, then turn left on NW 12 Avenue
 - Turn right on NW 7 Street
 - Turn right on NW 17 Avenue to connect with the westbound SR 836 ramp

TO VIEW A MAP OF THE DETOUR PLEASE [CLICK HERE.](#)

Continue reading on the next page...

ABOUT THE PROJECT

The I-395/SR 836/I-95 Design-Build Project will add capacity, enhance the flow of traffic and safety and improve access along I-395, SR 836 and I-95.



To view a video of the project,
please visit:
i395-miami.com/project-video



To view updated project photos,
please visit:
i395-miami.com/construction-photos

Please note that this schedule may change due to bad weather or other unforeseen conditions.

The work is part of the I-395/SR 836/I-95 Design-Build Project that will reconstruct the I-395 corridor from the SR 836/I-395/I-95 (Midtown) Interchange to the MacArthur Causeway Bridge, including the construction of a Signature Bridge over NE 2 Avenue and Biscayne Boulevard; double-deck SR 836 from west of NW 17 Avenue to the Midtown Interchange and the replacement of the concrete pavement on I-95 from NW 8 Street to NW 29 Street.

For additional information on the project please contact Oscar Gonzalez at 786-280-0983 or via email at ogonzalez@mrgmiami.com. Additional project information can be found on the project website, www.i-395miami.com.

For information on scheduled lane closures on FDOT Construction Projects that affect traffic to/from and in Miami Beach, please [click here](#).