



# I-395/SR 836/I-95 DESIGN-BUILD PROJECT

Financial Project Numbers: 251688-1-52-01, 423126-1-52-01, 423126-2-52-01, 429300-2-52-01

11-23-2022

## WEEKLY PROJECT UPDATE

**NOTE: THERE WILL BE NO CONSTRUCTION-RELATED LANE CLOSURES FROM WEDNESDAY EVENING, NOVEMBER 23 THROUGH MONDAY MORNING, NOVEMBER 28.**

### I-95 ONGOING CONSTRUCTION ACTIVITIES

- Pavement replacement activities have been completed from NW 17 Street to NW 29 Street
- Ongoing pavement inspections from NW 17 Street to NW 29 Street
- Nighttime concrete pavement replacement on I-95 from NW 8 Street to NW 17 Street
- Installation of Intelligent Transportation System devices
- Installation of new guardrail
- Traffic railing retrofit on several bridges

### I-95 LANE CLOSURES

- **MONDAY, NOVEMBER 28 THROUGH FRIDAY, DECEMBER 2 AND SUNDAY, DECEMBER 4 THROUGH FRIDAY, DECEMBER 9** - Up to four lanes on southbound I-95 from NW 29 Street to NW 8 Street will be closed between the hours of 9 p.m. and 5:30 a.m. The closures on Friday will occur between the hours of 11 p.m. and 11 a.m.
- **MONDAY, NOVEMBER 28 THROUGH FRIDAY, DECEMBER 2 AND SUNDAY, DECEMBER 4 THROUGH FRIDAY, DECEMBER 9** - Up to four lanes on northbound I-95 will be closed nightly from NW 8 Street to NW 29 Street between the hours of 9 p.m. and 5:30 a.m. The closures on Friday will occur between the hours of 11 p.m. and 11 a.m.

### NORTHBOUND I-95 RAMP TO EASTBOUND I-395 DETOUR

- **MONDAY, NOVEMBER 28** - The northbound I-95 ramp to eastbound I-395 will be closed between the hours of 9 p.m. and 5:30 a.m. Drivers can:
  - Exit at the NW 2 Street ramp (Exit 2B)
  - Continue north on NW 3 Avenue, then turn right on NW 8 Street
  - Continue east on NW/NE 8 Street
  - Turn left on Biscayne Boulevard to access A1A North/Miami Beach

TO VIEW A MAP OF THE DETOUR PLEASE [CLICK HERE](#).

*Continue reading on the next page...*

## I-395 ONGOING CONSTRUCTION ACTIVITIES



Installation of a temporary bridge over North Miami Avenue

- Construction of a temporary westbound and eastbound I-395 bypass from North Miami Avenue to I-95
- Installation of arch segments for the signature bridge
- Nighttime Auger Cast Pile installation for support tower foundations from east of Biscayne Boulevard to NE 1 Avenue between I-395 and NE 13 Street
- Erection of bridge segments between North Miami Avenue and NW 1 Place
- Ongoing work at four of the six signature bridge arches including placement of precast arch segments at arch two located just west of NE 2 Avenue
- Preparation for the next concrete pour at the signature bridge center pier foundation located between Biscayne Boulevard and NE 2 Avenue just north of I-395
- Nighttime roadway operations on I-395 from MacArthur Causeway to I-95

*Continue reading on the next page...*

## I-395 MAINLINE LANE CLOSURES

- **MONDAY, NOVEMBER 28 THROUGH FRIDAY, DECEMBER 2 AND SUNDAY, DECEMBER 4 THROUGH FRIDAY, DECEMBER 9** - One lane on mainline eastbound I-395 will be closed as needed from I-95 to Biscayne Boulevard between the hours of 10 p.m. and 5:30 a.m.
- **MONDAY, NOVEMBER 28 THROUGH FRIDAY, DECEMBER 2 AND SUNDAY, DECEMBER 4 THROUGH FRIDAY, DECEMBER 9** - Up to two lanes on mainline westbound I-395 will be closed as needed from Biscayne Boulevard to I-95 between the hours of 11:45 p.m. and 5:30 a.m.

## WESTBOUND I-395 RAMP TO NORTHBOUND I-95 DETOUR

- **MONDAY, NOVEMBER 28 THROUGH WEDNESDAY, NOVEMBER 30** - The westbound I-395 ramp to northbound I-95 will be closed as needed between the hours of 10 p.m. and 5:30 a.m. on Monday and between the hours of 11 p.m. and 5:30 on Tuesday and Wednesday. Drivers can:
  - Access the southbound I-95 ramp
  - Exit at SW 7 Street/Brickell Avenue (Exit 1B), then turn left at SW 8 Street
  - Enter the northbound I-95 ramp, then continue north on I-95

TO VIEW A MAP OF THE DETOUR PLEASE [CLICK HERE.](#)

## CLOSURE OF NW 14 STREET FROM NW 7 AVENUE TO NW 1 AVENUE

- **MONDAY, NOVEMBER 28 THROUGH FRIDAY, DECEMBER 2 AND MONDAY, DECEMBER 5 THROUGH FRIDAY, DECEMBER 9** - NW 14 Street will be closed from NW 7 Avenue to NW 1 Avenue between the hours of 10 p.m. and 5:30 a.m. to allow the contractor to work on segmental bridge construction over the roadway. Drivers can use NW 17 Street as an alternate route.

TO VIEW A MAP OF THE DETOUR PLEASE [CLICK HERE.](#)

## NE 2 AVENUE LANE CLOSURE

- **MONDAY, NOVEMBER 28** - One northbound lane on NE 2 Avenue from I-395 to NE 13 Street will be closed between the hours of 9 p.m. and 6 a.m. for a concrete pour at the signature bridge center pier.

*Continue reading on the next page...*



## LONG-TERM CLOSURE OF NW 1 PLACE

- NW 1 Place from NW 13 Street to NW 14 Street will remain continuously closed until further notice to allow the contractor to work on bridges over the roadways.

TO VIEW A MAP OF THE DETOUR PLEASE [CLICK HERE](#)

## CLOSURE OF NW 14 TERRACE

- NW 14 Terrace will be closed from NW 3 Avenue to NW 2 Avenue until further notice to allow the contractor to construct bridge foundations. Drivers can use NW 15 Street as an alternate.

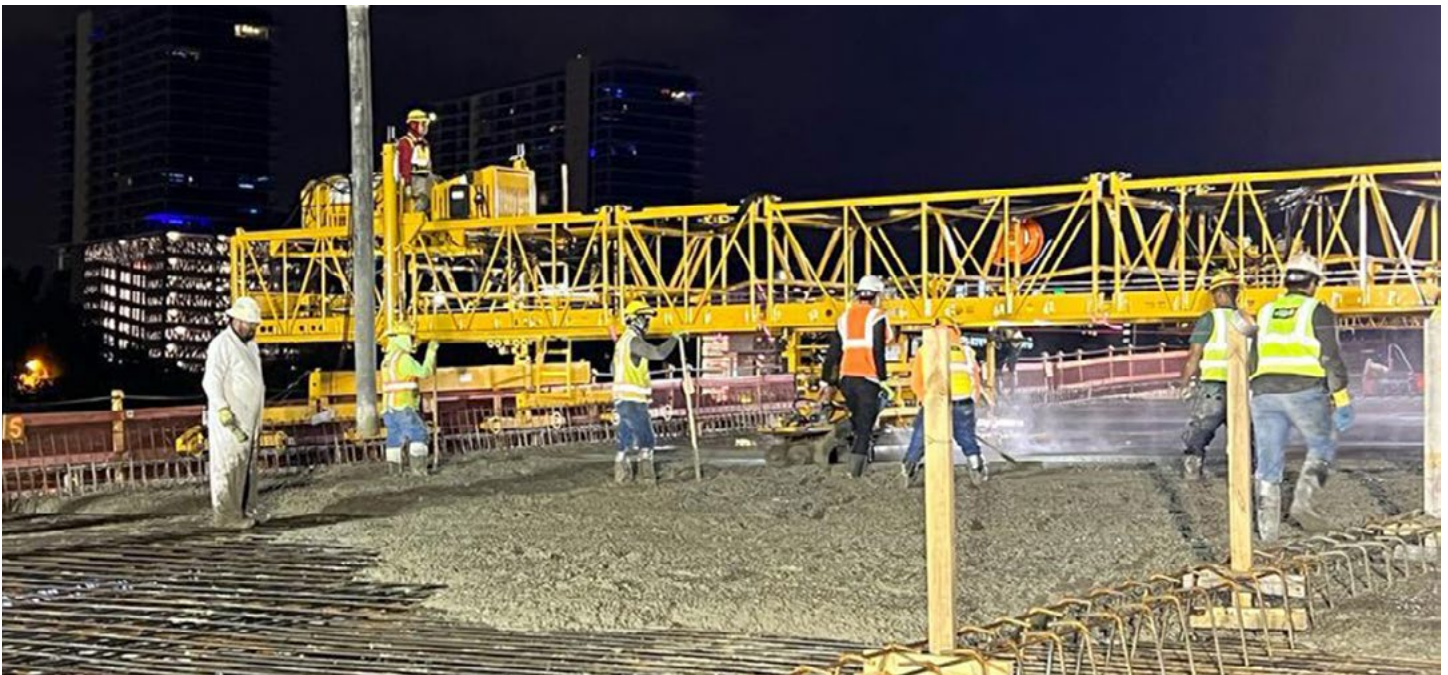
## LONG-TERM CLOSURE OF NW 1 COURT

- NW 1 Court from NW 13 Street to NW 14 Street and NW 13 Street from NW 1 Avenue to NW 1 Court will remain continuously closed until further notice to allow the contractor to work on bridges over the roadways.

TO VIEW A MAP OF THE DETOUR PLEASE [CLICK HERE](#)

---

## SR 836 ONGOING CONSTRUCTION ACTIVITIES



First concrete deck pour for the new SR 836 double decked roadway

*Continue reading on the next page...*

- Installation of SR 836 bridge cap segments and beams for the double decked roadway using the overhead lifter (**NIGHTTIME FULL CLOSURES OF SR 836 WILL BE IMPLEMENTED AS NEEDED**)
- Bridge widening activities on eastbound SR 836 over NW 14 Street and NW 10 Avenue
- Construction of trestle bridge in the Miami River south bank between the shoreline and the fendering system
- Continued substructure activities on or adjacent to SR 836 from NW 7 Avenue to NW 12 Avenue
- Foundation construction at the Richard E. Gerstein Justice Building parking area
- Ongoing casting of bridge caps
- Construction of double decked substructure and piers at the core of the interchange

## SR 836 LANE CLOSURES

- **MONDAY, NOVEMBER 28 THROUGH FRIDAY, DECEMBER 2 AND SUNDAY, DECEMBER 4 THROUGH FRIDAY, DECEMBER 9** - Up to two lanes on eastbound SR 836 from NW 17 Avenue to I-95 will be closed as needed between the hours of 9 p.m. and 5:30 a.m.
- **MONDAY, NOVEMBER 28 THROUGH FRIDAY, DECEMBER 2 AND SUNDAY, DECEMBER 4 THROUGH FRIDAY, DECEMBER 9** - Up to two westbound lanes on SR 836 from I-95 to NW 17 Avenue will be closed as needed between the hours of 9 p.m. and 5:30 a.m.

## EASTBOUND SR 836 RAMP TO NORTHBOUND I-95 DETOUR

- **MONDAY, NOVEMBER 28 THROUGH WEDNESDAY, NOVEMBER 30** - The eastbound SR 836 ramp to northbound I-95 will be closed as needed between the hours of 9 p.m. and 5:30 a.m.  
Drivers can:
  - Access the southbound I-95/NW 8 Street ramp, then exit at the NW 8 Street/PortMiami ramp
  - Turn left at NW 8 Street
  - Turn left at NW 3 Avenue to access the northbound I-95 ramp

TO VIEW A MAP OF THE DETOUR PLEASE [CLICK HERE](#).

## DAYTIME NW 7 AVENUE LANE CLOSURES

- **MONDAY, NOVEMBER 28 THROUGH FRIDAY, DECEMBER 2 AND MONDAY, DECEMBER 5 THROUGH FRIDAY, DECEMBER 9** - One southbound lane on NW 7 Avenue will be closed as needed from NW 15 Street to NW 14 Street between the hours of 9 a.m. and 3:30 p.m.

*Continue reading on the next page...*

---

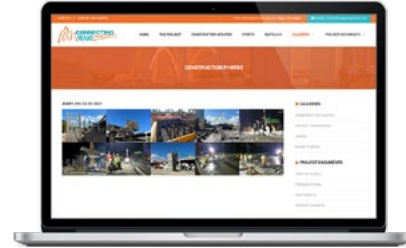
## ABOUT THE PROJECT

The I-395/SR 836/I-95 Design-Build Project will add capacity, enhance the flow of traffic and safety and improve access along I-395, SR 836 and I-95.



To view a video of the project,  
please visit:

[i395-miami.com/project-video](http://i395-miami.com/project-video)



To view updated project photos,  
please visit:

[i395-miami.com/construction-photos](http://i395-miami.com/construction-photos)

---

**Please note that this schedule may change due to bad weather or other unforeseen conditions.**

The work is part of the I-395/SR 836/I-95 Design-Build Project that will reconstruct the I-395 corridor from the SR 836/I-395/I-95 (Midtown) Interchange to the MacArthur Causeway Bridge, including the construction of a Signature Bridge over NE 2 Avenue and Biscayne Boulevard; double-deck SR 836 from west of NW 17 Avenue to the Midtown Interchange and the replacement of the concrete pavement on I-95 from NW 8 Street to NW 29 Street.

For additional information on the project please contact Oscar Gonzalez at 786-280-0983 or via email at [ogonzalez@mrgmiami.com](mailto:ogonzalez@mrgmiami.com). Additional project information can be found on the project website, [www.I-395miami.com](http://www.I-395miami.com).

---

For information on scheduled lane closures on FDOT Construction Projects that affect traffic to/from and in Miami Beach, please [click here](#).