









## LANE CLOSURES ON MACARTHUR CAUSEWAY AND FULL CLOSURE OF PARROT JUNGLE TRAIL

On **SUNDAY, DECEMBER 11 THROUGH THURSDAY, DECEMBER 15** the following closures will be implemented nightly to relocate an overhead electronic message sign:

- Three lanes on westbound MacArthur Causeway will be closed from the entrance to Parrot Jungle Trail to just west of the PortMiami Tunnel between the hours of 10 p.m. and 5:30 a.m. One right lane will close at 10 p.m., the adjacent lane will close at 11 p.m. and the third lane will close at midnight. One travel lane will remain open, and all lanes will reopen at 5:30 a.m.
- All lanes on Parrot Jungle Trail in Watson Island will be closed from the Miami Children's Museum to Jungle Island between midnight and 5:30 a.m.
  - Drivers on eastbound MacArthur Causeway heading to the north side of Watson Island can:
    - Continue east on MacArthur Causeway and make a U-turn at the signalized intersection at Fountain Street
    - Go west on MacArthur Causeway and enter Parrot Jungle Trail
  - Drivers on westbound MacArthur Causeway heading to the south side of Watson Island can:
    - Continue west on MacArthur Causeway and exit at the Biscayne Boulevard ramp
    - Turn left at Biscayne Boulevard, then turn left onto the MacArthur Causeway entrance ramp
    - Continue east on MacArthur Causeway and turn right onto Parrot Jungle Trail after passing the Miami Children's Museum

TO VIEW A MAP OF THE DETOUR PLEASE [CLICK HERE](#).

## CLOSURE OF BISCAYNE BOULEVARD FOR TRAVEL LANE SHIFT

On **TUESDAY, DECEMBER 13 (WEDNESDAY, DECEMBER 14 IS AN ALTERNATE NIGHT)** - All lanes on Biscayne Boulevard from NE 13 Street to NE 11 Street will be closed to allow the contractor to shift the northbound lanes to the east and southbound lanes to the west. The lane shift is necessary to set up a work zone in the center of the roadway.

- Southbound drivers can:
  - Turn right on NE 13 Street, then turn left on NE 2 Avenue
  - Turn left on NE 8 Street to access Biscayne Boulevard
- Northbound drivers can:
  - Turn left on NE 11 Street, then turn right on NE 1 Avenue
  - Turn right on NE 14 Street to connect with Biscayne Boulevard

TO VIEW A MAP OF THE DETOURS PLEASE [CLICK HERE](#).

*Continue reading on the next page...*

## **LANE CLOSURE ON EASTBOUND I-395 RAMP (EXIT 2A) TO NE 2 AVENUE/ BISCAYNE BOULEVARD**

- **WEDNESDAY, DECEMBER 7 THROUGH FRIDAY, DECEMBER 9** - One lane on the eastbound I-395 ramp to NE 2 Avenue/Biscayne Boulevard will be closed between the hours of 10 p.m. and 5:30 a.m.

## **CLOSURE OF NW 14 STREET FROM NW 7 AVENUE TO NW 1 AVENUE**

- **WEDNESDAY, DECEMBER 7 THROUGH FRIDAY, DECEMBER 9 AND MONDAY, DECEMBER 12 THROUGH FRIDAY, DECEMBER 16** - NW 14 Street will be closed from NW 7 Avenue to NW 1 Avenue between the hours of 10 p.m. and 5:30 a.m. to allow the contractor to work on segmental bridge construction over the roadway. Drivers can use NW 17 Street as an alternate route.

TO VIEW A MAP OF THE DETOUR PLEASE [CLICK HERE](#).

## **LONG-TERM CLOSURE OF NW 1 PLACE**

- NW 1 Place from NW 13 Street to NW 14 Street will remain continuously closed until further notice to allow the contractor to work on bridges over the roadways.

TO VIEW A MAP OF THE DETOUR PLEASE [CLICK HERE](#)

## **CLOSURE OF NW 14 TERRACE**

- NW 14 Terrace will be closed from NW 3 Avenue to NW 2 Avenue until further notice to allow the contractor to construct bridge foundations. Drivers can use NW 15 Street as an alternate.

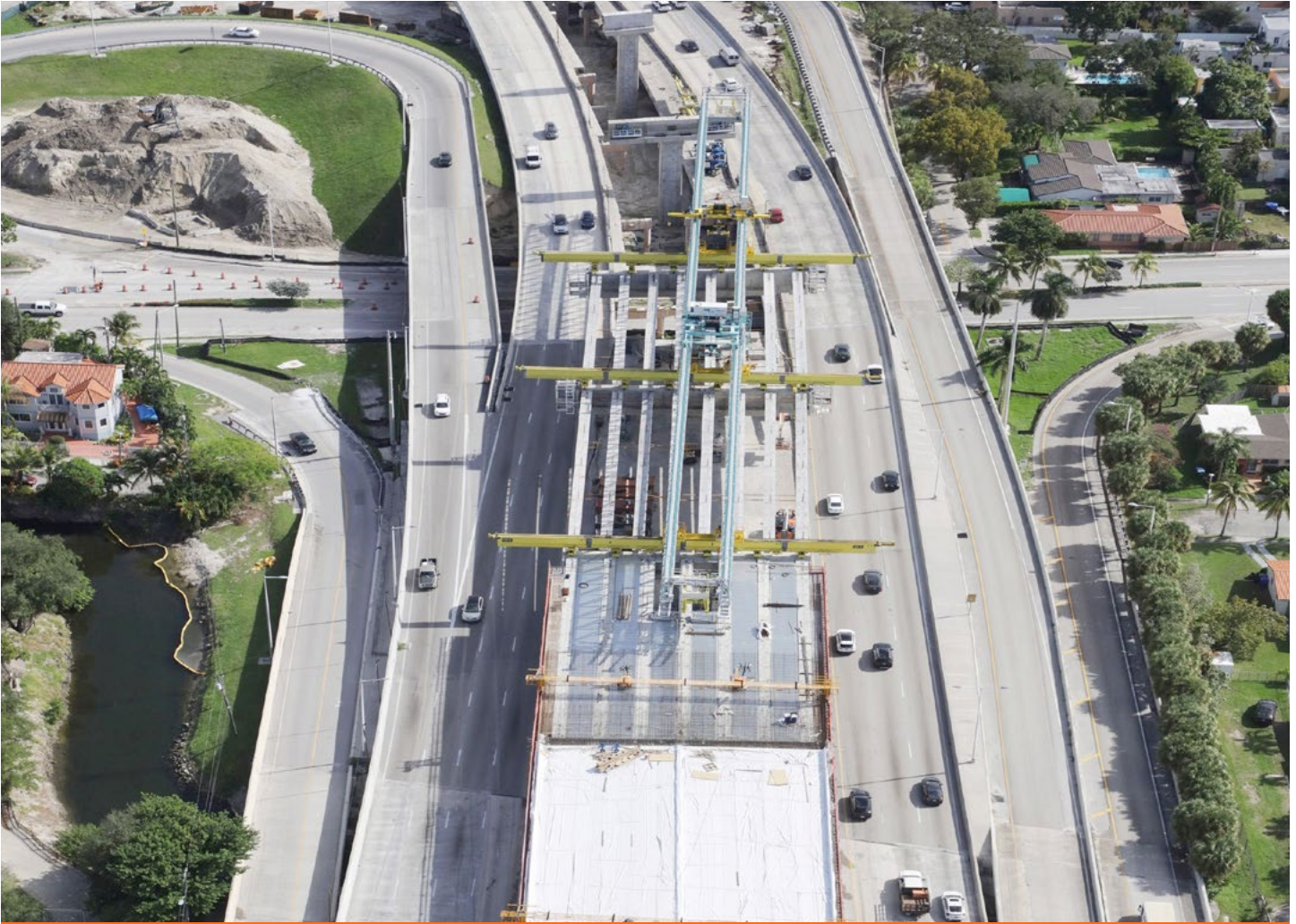
## **LONG-TERM CLOSURE OF NW 1 COURT**

- NW 1 Court from NW 13 Street to NW 14 Street and NW 13 Street from NW 1 Avenue to NW 1 Court will remain continuously closed until further notice to allow the contractor to work on bridges over the roadways.

TO VIEW A MAP OF THE DETOUR PLEASE [CLICK HERE](#)

*Continue reading on the next page...*

## SR 836 ONGOING CONSTRUCTION ACTIVITIES



View of the entrance and exit ramp for the new SR 836 double decked roadway. First concrete deck for the double decked section has been completed

- Installation of SR 836 bridge cap segments and beams for the double decked roadway using the overhead lifter (**NIGHTTIME FULL CLOSURES OF SR 836 WILL BE IMPLEMENTED AS NEEDED**)
- Bridge widening activities on eastbound SR 836 over NW 14 Street and NW 10 Avenue
- Construction of trestle bridge in the Miami River south bank between the shoreline and the fendering system
- Continued substructure activities on or adjacent to SR 836 from NW 7 Avenue to NW 12 Avenue
- Foundation construction at the Richard E. Gerstein Justice Building parking area
- Ongoing casting of bridge caps
- Construction of double decked substructure and piers at the core of the interchange

*Continue reading on the next page...*

## SR 836 LANE CLOSURES

- **WEDNESDAY, DECEMBER 7 THROUGH FRIDAY, DECEMBER 9 AND SUNDAY, DECEMBER 11 THROUGH FRIDAY, DECEMBER 16** - Two eastbound lanes on SR 836 from NW 17 Avenue to I-95 will be closed for bridge work between the hours of 9 p.m. and 5:30 a.m.
- **WEDNESDAY, DECEMBER 7 THROUGH FRIDAY, DECEMBER 9 AND SUNDAY, DECEMBER 11 THROUGH FRIDAY, DECEMBER 16** - Two westbound lanes on SR 836 from I-95 to NW 17 Avenue will be closed for bridge work between the hours of 9 p.m. and 5:30 a.m.

## CONTINUOUS WEEKEND CLOSURES OF THE NW 12 AVENUE RAMPS TO EASTBOUND SR 836 FOR PAVING OPERATIONS

- **FRIDAY, DECEMBER 9 THROUGH MONDAY, DECEMBER 12** – The northbound and southbound NW 12 Avenue ramps to eastbound SR 836 will be continuously closed starting at 9 p.m. on Friday, December 9 until 5:30 a.m. on Monday, December 12. Drivers can:
  - Go east on NW 11 Street, then turn right at NW 8 Street Road
  - Turn left on NW 8 Street and continue east to Biscayne Boulevard
  - Turn left on Biscayne Boulevard to connect with the A1A North/Miami Beach ramp

TO VIEW A MAP OF THE DETOUR PLEASE [CLICK HERE](#).

## NORTHBOUND NW 12 AVENUE RAMP TO EASTBOUND SR 836 DETOUR

- **MONDAY, DECEMBER 12 THROUGH WEDNESDAY, DECEMBER 14** -The northbound NW 12 Avenue ramp to eastbound SR 836 will be closed between the hours of 8 p.m. and 11 p.m. Drivers can:
  - Continue north on NW 12 Avenue, then turn left on NW 12 Street
  - Turn right on NW 13 Avenue, then turn right on NW 14 Street
  - Turn right on NW 12 Avenue to access the southbound NW 12 Avenue entrance ramp to SR 836 east

TO VIEW A MAP OF THE DETOUR PLEASE [CLICK HERE](#).

*Continue reading on the next page...*



## EASTBOUND SR 836 RAMP TO NORTHBOUND I-95 DETOUR

- **WEDNESDAY, DECEMBER 7 THROUGH FRIDAY, DECEMBER 9 AND SUNDAY, DECEMBER 11 THROUGH FRIDAY, DECEMBER 16** - The eastbound SR 836 ramp to northbound I-95 will be closed between the hours of 9 p.m. And 5:30 a.m. Drivers can:
  - Access the southbound I-95/NW 8 Street ramp, then exit at the NW 8 Street/PortMiami ramp
  - Turn left at NW 8 Street
  - Turn left at NW 3 Avenue to access the northbound I-95 ramp

TO VIEW A MAP OF THE DETOUR PLEASE [CLICK HERE.](#)

## DAYTIME NW 7 AVENUE LANE CLOSURES

**WEDNESDAY, DECEMBER 7 THROUGH FRIDAY, DECEMBER 9 AND MONDAY, DECEMBER 12 THROUGH FRIDAY, DECEMBER 16** - One southbound lane on NW 7 Avenue will be closed as needed from NW 15 Street to NW 14 Street between the hours of 9 a.m. and 3:30 p.m.

## NW 14 STREET CLOSURE

- **WEDNESDAY, DECEMBER 7, THURSDAY, DECEMBER 8, MONDAY, DECEMBER 12 AND TUESDAY, DECEMBER 13** - NW 14 Street will be closed as needed from NW 7 Avenue to NW 10 Avenue between the hours of 9 p.m. and 5:30 a.m.
  - Drivers on westbound NW 14 Street can:
    - Turn right on NW 7 Avenue, then turn left on NW 17 Street
    - Turn left on NW 9 Avenue and follow NW 10 Avenue to connect with NW 14 Street
  - Drivers on eastbound NW 14 Street can:
    - Turn left on NW 10 Avenue and follow NW 9 Avenue, then turn right on NW 17 Street
    - Turn right on NW 7 Avenue to connect with NW 14 Street

TO VIEW A MAP OF THE DETOUR PLEASE [CLICK HERE.](#)

---

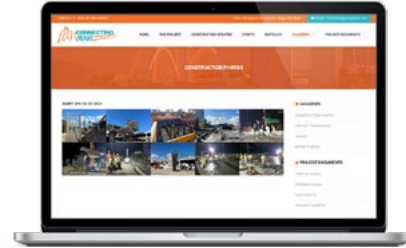
## ABOUT THE PROJECT

The I-395/SR 836/I-95 Design-Build Project will add capacity, enhance the flow of traffic and safety and improve access along I-395, SR 836 and I-95.



To view a video of the project,  
please visit:

[i395-miami.com/project-video](http://i395-miami.com/project-video)



To view updated project photos,  
please visit:

[i395-miami.com/construction-photos](http://i395-miami.com/construction-photos)

---

**Please note that this schedule may change due to bad weather or other unforeseen conditions.**

The work is part of the I-395/SR 836/I-95 Design-Build Project that will reconstruct the I-395 corridor from the SR 836/I-395/I-95 (Midtown) Interchange to the MacArthur Causeway Bridge, including the construction of a Signature Bridge over NE 2 Avenue and Biscayne Boulevard; double-deck SR 836 from west of NW 17 Avenue to the Midtown Interchange and the replacement of the concrete pavement on I-95 from NW 8 Street to NW 29 Street.

For additional information on the project please contact Oscar Gonzalez at 786-280-0983 or via email at [ogonzalez@mrgmiami.com](mailto:ogonzalez@mrgmiami.com). Additional project information can be found on the project website, [www.i-395miami.com](http://www.i-395miami.com).

---

For information on scheduled lane closures on FDOT Construction Projects that affect traffic to/from and in Miami Beach, please [click here](#).