



# I-395/SR 836/I-95 DESIGN-BUILD PROJECT

Financial Project Numbers: 251688-1-52-01, 423126-1-52-01, 423126-2-52-01, 429300-2-52-01

04-05-2023

## WEEKLY PROJECT UPDATE

### I-95 ONGOING CONSTRUCTION ACTIVITIES

- Ongoing work to relocate the 95 Express entrance and exit points back to their original and permanent location, approximately one mile south to NW 29 Street
- Ongoing pavement inspections from NW 17 Street to NW 29 Street
- Nighttime concrete pavement replacement on I-95 from NW 8 Street to NW 17 Street
- Installation of Intelligent Transportation System devices
- Installation of new guardrail
- Traffic railing retrofit on several bridges

### I-95 LANE CLOSURES

- **WEDNESDAY, APRIL 5 THROUGH FRIDAY, APRIL 7 AND SUNDAY, APRIL 9 THROUGH FRIDAY, APRIL 14** - Up to four lanes on southbound I-95 from NW 29 Street to NW 8 Street will be closed as needed between the hours of 9 p.m. and 5:30 a.m. Closures on Fridays will be implemented between the hours of 11 p.m. and 11 a.m.
- **WEDNESDAY, APRIL 5 THROUGH FRIDAY, APRIL 7 AND SUNDAY, APRIL 9 THROUGH FRIDAY, APRIL 14** - Up to four lanes on northbound I-95 will be closed as needed from NW 8 Street to NW 29 Street between the hours of 9 p.m. and 5:30 a.m. Closures on Fridays will be implemented between the hours of 11 p.m. and 11 a.m.

### EASTBOUND SR 112 AND WESTBOUND I-195 RAMP TO SOUTHBOUND I-95

- **SUNDAY, APRIL 9 THROUGH FRIDAY, APRIL 14** - The eastbound SR 112 and westbound I-195 ramps to southbound I-95 will be closed as needed between the hours of 9 p.m. and 5:30 a.m. Drivers can:
  - Continue north on I-95 and exit at NW 62 Street
  - Turn left at NW 62 Street to access the southbound I-95 ramp

TO VIEW A MAP OF THE DETOUR PLEASE [CLICK HERE.](#)

*Continue reading on the next page...*

## NORTHBOUND I-95 RAMP TO EASTBOUND I-395 DETOUR

- **WEDNESDAY, APRIL 5, SUNDAY, APRIL 9 AND MONDAY, APRIL 10** - The northbound I-95 ramp to eastbound I-395 will be closed between the hours of 10 p.m. and 5:30 a.m. Drivers can:
  - Exit at the NW 2 Street ramp (Exit 2B)
  - Continue north on NW 3 Avenue, then turn right on NW 8 Street
  - Continue east on NW/NE 8 Street
  - Turn left on Biscayne Boulevard to access A1A North/Miami Beach

TO VIEW A MAP OF THE DETOUR PLEASE [CLICK HERE](#).

## SOUTHBOUND I-95 RAMP TO EASTBOUND I-395 DETOUR

- **WEDNESDAY, APRIL 5 AND THURSDAY, APRIL 6** - The southbound I-95 ramp to eastbound I-395 will be closed between the hours of 10 p.m. and 5:30 a.m. Drivers can:
  - Continue south on I-95, exit at the NW 8 Street ramp (Exit 3B)
  - Turn left on NW 8 Street, continue east on NW 8 Street
  - Turn left at Biscayne Boulevard to access the A1A North/Miami Beach Ram

TO VIEW A MAP OF THE DETOUR PLEASE [CLICK HERE](#).

## NORTHBOUND 95 EXPRESS CLOSURE

- **WEDNESDAY, APRIL 5, THURSDAY, APRIL 6 AND SUNDAY, APRIL 9 THROUGH FRIDAY, APRIL 14** - All northbound 95 Express Lanes will be closed from SR 112 to the Golden Glades Interchange between the hours of 10 p.m. and 5:30 a.m.

## SOUTHBOUND 95 EXPRESS CLOSURE

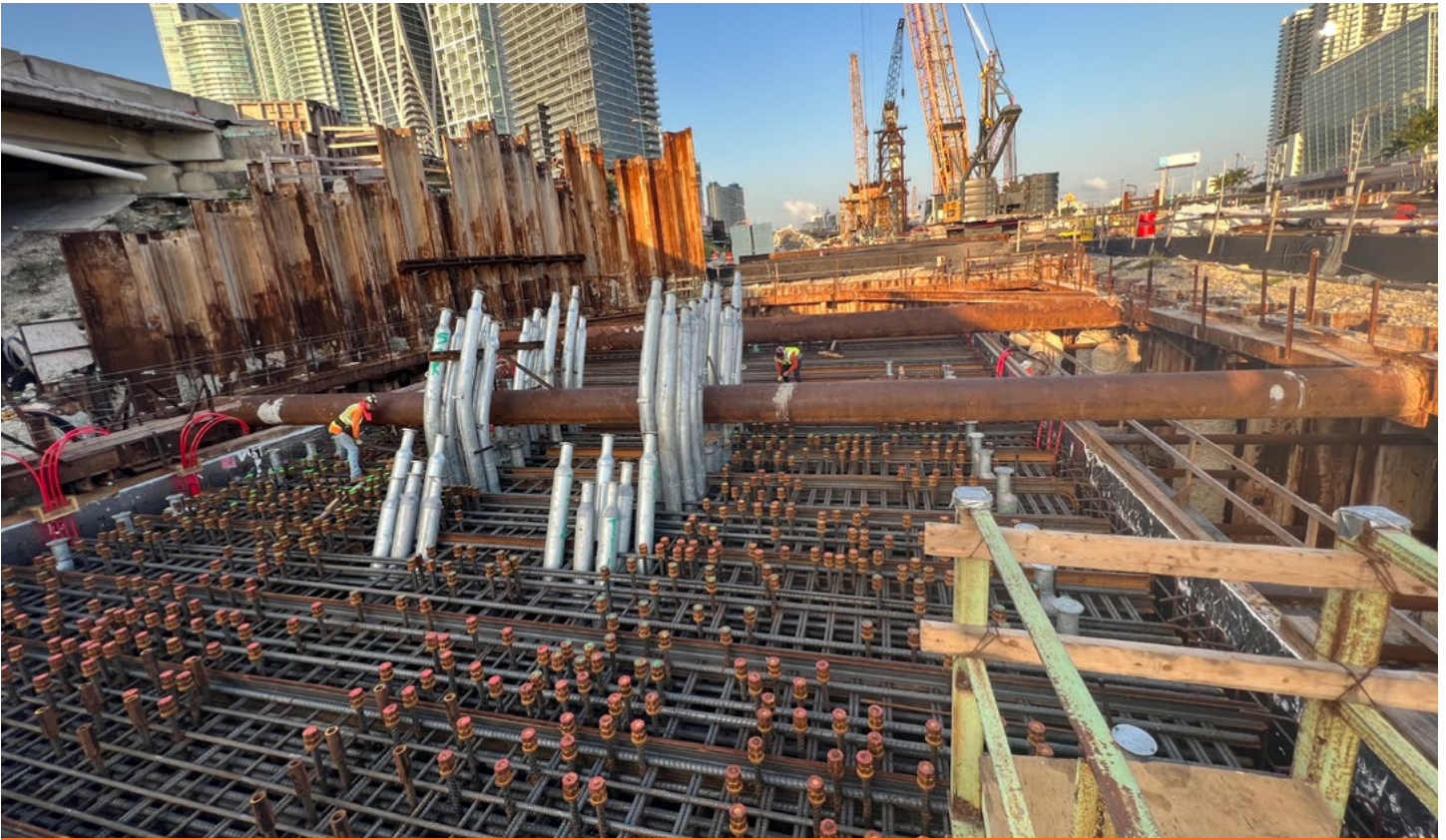
- **WEDNESDAY, APRIL 5, THURSDAY, APRIL 6 AND SUNDAY, APRIL 9 THROUGH FRIDAY, APRIL 14** - All southbound 95 Express Lanes will be closed from the Golden Glades Interchange to SR 112 between the hours of 10 p.m. and 5:30 a.m.

## NIGHTTIME CLOSURE OF THE NORTHBOUND I-95 RAMP TO I-195 EAST/MIAMI BEACH (EXIT 4A)

- **WEDNESDAY, APRIL 5 THROUGH FRIDAY, APRIL 7 AND SUNDAY, APRIL 9 THROUGH FRIDAY, APRIL 14** - The northbound I-95 ramp to I-195 East/Miami Beach (Exit 4A) will be closed as needed between the hours of 9 p.m. and 5:30 a.m. Drivers can continue north on I-95 to access the I-195 East/Miami Beach ramp (Exit 4B) located north of NW 32 Street.

*Continue reading on the next page...*

## I-395 ONGOING CONSTRUCTION ACTIVITIES



Crews placing reinforcing steel at one of the signature bridge arch foundations in preparation for an upcoming concrete pour

- Construction of a temporary westbound and eastbound I-395 bypass from North Miami Avenue to I-95
- Installation of arch segments for the signature bridge
- Construction of arch foundation east of Biscayne Boulevard
- Construction of an elevated temporary roadway at the Biscayne Boulevard ramp to the MacArthur Causeway
- Demolition of median section of I-395 over Biscayne Boulevard for a future traffic shift
- Nighttime Auger Cast Pile installation for support tower foundations from east of Biscayne Boulevard to NE 1 Avenue between I-395 and NE 13 Street
- Ongoing work at four of the six signature bridge arches including placement of precast arch segments at arch two located just west of NE 2 Avenue
- Preparation for the next concrete pour at the signature bridge center pier foundation located between Biscayne Boulevard and NE 2 Avenue just north of I-395
- Construction of foundations for temporary arch support towers along Biscayne Boulevard
- Nighttime roadway operations on I-395 from MacArthur Causeway to I-95

*Continue reading on the next page...*

## I-395 MAINLINE LANE CLOSURES

- **WEDNESDAY, APRIL 5 THROUGH FRIDAY, APRIL 7 AND SUNDAY, APRIL 9 THROUGH FRIDAY, APRIL 14** - One lane on mainline eastbound I-395 will be closed as needed from I-95 to Biscayne Boulevard between the hours of 10 p.m. and 5:30 a.m.
- **WEDNESDAY, APRIL 5 THROUGH FRIDAY, APRIL 7 AND SUNDAY, APRIL 9 THROUGH FRIDAY, APRIL 14** - Up to two lanes on mainline westbound I-395 will be closed as needed from Biscayne Boulevard to I-95 between the hours of 10 p.m. and 5:30 a.m.

## WESTBOUND I-395 RAMP TO NORTHBOUND I-95 DETOUR

- **TUESDAY, APRIL 11** - The westbound I-395 ramp to northbound I-95 will be closed as needed between the hours of 10 p.m. and 5:30 a.m. Drivers can:
  - Access the southbound I-95 ramp
  - Exit at SW 7 Street/Brickell Avenue (Exit 1B), then turn left at SW 8 Street
  - Enter the northbound I-95 ramp, then continue north on I-95

TO VIEW A MAP OF THE DETOUR PLEASE [CLICK HERE](#).

## WESTBOUND I-395 RAMP TO SOUTHBOUND I-95 DETOUR

- **WEDNESDAY, APRIL 5 AND SUNDAY, APRIL 9 THROUGH FRIDAY, APRIL 14** - The westbound I-395 ramp to southbound I-95 will be closed between the hours of 9 p.m. and 5:30 a.m. Drivers can:
  - Go north on I-95, then exit at NW 62 Street
  - Turn left at NW 62 Street to access the southbound I-95 ramp

TO VIEW A MAP OF THE DETOUR PLEASE [CLICK HERE](#).

## NE 13 STREET CLOSURES

- **WEDNESDAY, APRIL 5 AND MONDAY, APRIL 10 THROUGH WEDNESDAY, APRIL 12** - NE 13 Street from NE 2 Avenue to NE 1 Avenue will be closed as needed between the hours of 11:30 p.m. and 5:30 a.m.
  - Drivers can go south on NE 2 Avenue to NE 11 Street
  - Turn right on NE 11 Street
  - Turn right on NE 1 Avenue to access the I-395 ramp or continue north

*Continue reading on the next page...*

## NE 2 AVENUE CLOSURES

- **WEDNESDAY, APRIL 5 AND MONDAY, APRIL 10 THROUGH WEDNESDAY, APRIL 12** - NE 2 Avenue from NE 13 Street to I-395 will be closed as needed between the hours of 11:30 p.m. and 5:30 a.m.
  - Drivers on southbound NE 2 Avenue can:
    - Turn left on NE 14 Street, then turn right on Biscayne Boulevard
    - Turn right on NE 11 Street to connect with NE 2 Avenue
  - Drivers exiting I-395 can:
    - Continue east on NE 11 Terrace, then turn left on Biscayne Boulevard
    - Turn left on NE 14 Street to connect with NE 2 Avenue

TO VIEW A MAP OF THE DETOUR PLEASE [CLICK HERE](#).

**NOTE: NE 2 AVENUE AND NE 13 STREET WILL NOT BE CLOSED AT THE SAME TIME. THE CLOSURES WILL BE STAGGERED.**

## CLOSURES ON BISCAYNE BOULEVARD

- **WEDNESDAY, APRIL 5 THROUGH FRIDAY, APRIL 7 AND SUNDAY, APRIL 9 THROUGH FRIDAY, APRIL 14** - One lane on northbound and southbound Biscayne Boulevard will be closed as needed from NE 11 Street to NE 13 Street between the hours of 9 a.m. and 3:30 p.m., and between the hours of 10 p.m. and 5:30 a.m.

## LONG-TERM CLOSURE OF NW 1 PLACE

- NW 1 Place from NW 13 Street to NW 14 Street will remain continuously closed until further notice to allow the contractor to work on bridges over the roadways.

TO VIEW A MAP OF THE DETOUR PLEASE [CLICK HERE](#)

## CLOSURE OF NW 14 TERRACE

- NW 14 Terrace will be closed from NW 3 Avenue to NW 2 Avenue until further notice to allow the contractor to construct bridge foundations. Drivers can use NW 15 Street as an alternate.

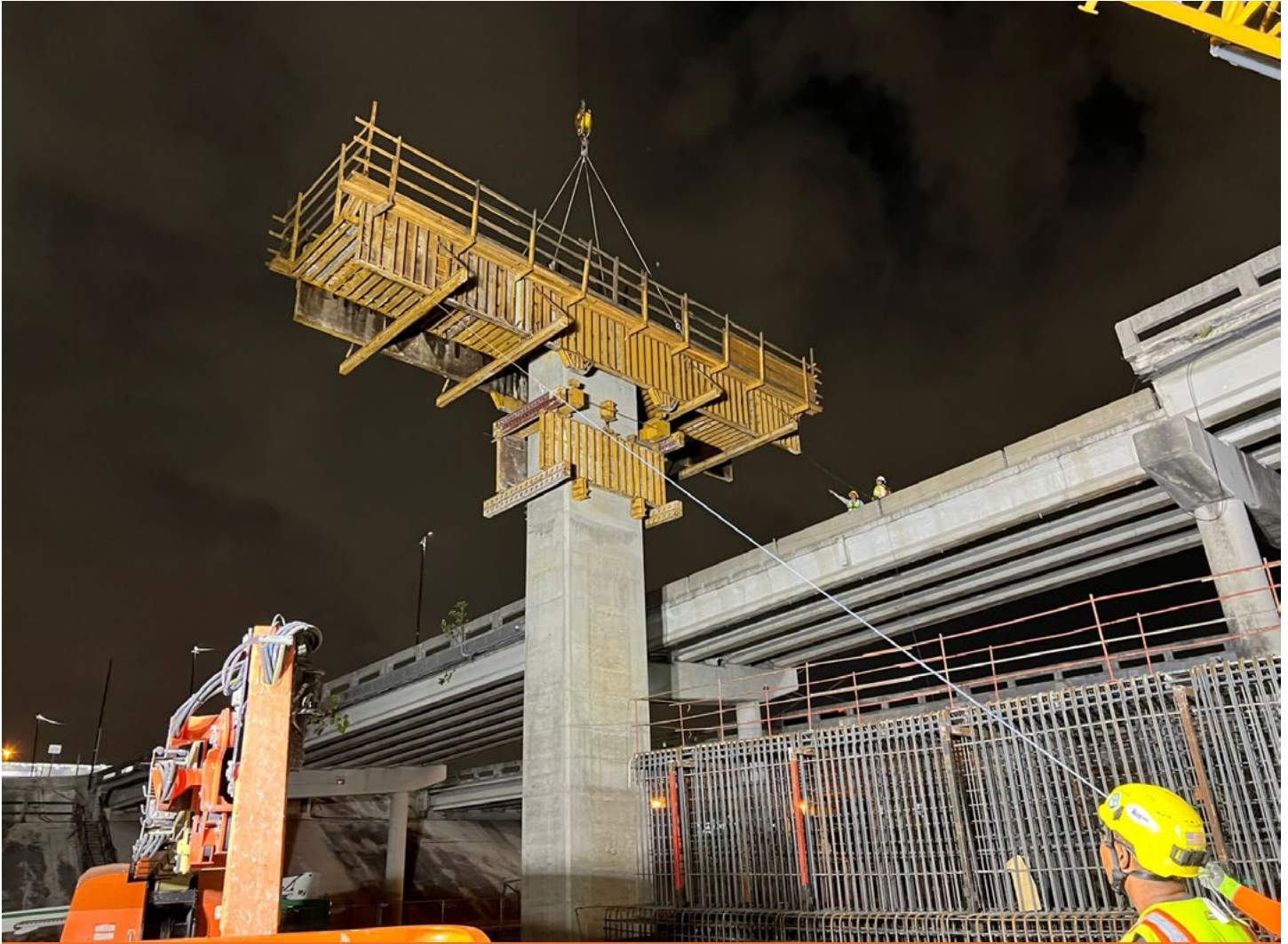
## LONG-TERM CLOSURE OF NW 1 COURT

- NW 1 Court from NW 13 Street to NW 14 Street and NW 13 Street from NW 1 Avenue to NW 1 Court will remain continuously closed until further notice to allow the contractor to work on bridges over the roadways.

TO VIEW A MAP OF THE DETOUR PLEASE [CLICK HERE](#)

*Continue reading on the next page...*

## SR 836 ONGOING CONSTRUCTION ACTIVITIES



Erection of concrete forms for pier cap at the core of the interchange

- Installation of SR 836 bridge pier cap segments and beams for the double decked roadway using the overhead lifter
- Bridge widening activities on eastbound SR 836 over NW 14 Street and NW 10 Avenue
- Construction of trestle bridge in the Miami River east bank between the shoreline and the fendering system
- Drilled shaft foundation construction activities in the Miami River west bank between the shoreline and the fendering system
- Pier construction at the Richard E. Gerstein Justice Building parking area
- Ongoing casting of bridge caps
- Construction of double decked piers at the core of the interchange

*Continue reading on the next page...*

## SR 836 LANE CLOSURES

- **WEDNESDAY, APRIL 5 THROUGH FRIDAY, APRIL 7 AND SUNDAY, APRIL 9 THROUGH FRIDAY, APRIL 14** - Two eastbound lanes on SR 836 from NW 17 Avenue to I-95 will be closed as needed for bridge work between the hours of 9 p.m. and 5:30 a.m.
- **WEDNESDAY, APRIL 5 THROUGH FRIDAY, APRIL 7 AND SUNDAY, APRIL 9 THROUGH FRIDAY, APRIL 14** - Two westbound lanes on SR 836 from I-95 to NW 17 Avenue will be closed as needed for bridge work between the hours of 9 p.m. and 5:30 a.m.

### EASTBOUND SR 836 RAMP TO NORTHBOUND I-95 DETOUR

- **WEDNESDAY, APRIL 5, THURSDAY, APRIL 6 AND MONDAY, APRIL 10 THROUGH FRIDAY, APRIL 14** - The eastbound SR 836 ramp to northbound I-95 will be closed as needed between the hours of 9 p.m. and 5:30 a.m. The closures on April 14 will begin at 11 p.m. Drivers can:
  - Access the southbound I-95/NW 8 Street ramp, then exit at the NW 8 Street/PortMiami ramp
  - Turn left at NW 8 Street
  - Turn left at NW 3 Avenue to access the northbound I-95 ramp

TO VIEW A MAP OF THE DETOUR PLEASE [CLICK HERE.](#)

### EASTBOUND SR 836 RAMP TO SOUTHBOUND I-95 DETOUR

- **WEDNESDAY, APRIL 5 AND THURSDAY, APRIL 6** - The eastbound SR 836 ramp to southbound I-95 will be closed between the hours of 10 p.m. and 5:30 a.m. Drivers can:
  - Continue east on I-395
  - Exit at NE 2 Avenue/Biscayne Boulevard (Exit 2A)
  - Turn right on NE 2 Avenue, then turn right on NE 11 Street
  - Turn right on NE 1 Avenue to access the I-95 south ramp

TO VIEW A MAP OF THE DETOUR PLEASE [CLICK HERE.](#)

### NORTHBOUND NW 12 AVENUE RAMP TO EASTBOUND SR 836 DETOUR

- **SUNDAY, APRIL 9 AND MONDAY, APRIL 10** - The northbound NW 12 Avenue ramp to eastbound SR 836 will be closed between the hours of 9 p.m. and 5:30 a.m. Drivers can:
  - Continue north on NW 12 Avenue, then turn left on NW 12 Street
  - Turn right on NW 13 Avenue, then turn right on NW 14 Street
  - Turn right on NW 12 Avenue to access the southbound NW 12 Avenue entrance ramp to SR 836 east

TO VIEW A MAP OF THE DETOUR PLEASE [CLICK HERE.](#)

*Continue reading on the next page...*

## NW 14 STREET CLOSURE

- **WEDNESDAY, APRIL 5, THURSDAY, APRIL 6 AND MONDAY, APRIL 10 THROUGH FRIDAY, APRIL 14** - NW 14 Street will be closed from NW 7 Avenue to NW 10 Avenue between the hours of 9 p.m. and 5:30 a.m.
  - Drivers on westbound NW 14 Street can:
    - Turn right on NW 7 Avenue, then turn left on NW 17 Street
    - Turn left on NW 9 Avenue and follow NW 10 Avenue to connect with NW 14 Street
  - Drivers on eastbound NW 14 Street can:
    - Turn left on NW 10 Avenue and follow NW 9 Avenue, then turn right on NW 17 Street
    - Turn right on NW 7 Avenue to connect with NW 14 Street

TO VIEW A MAP OF THE DETOUR PLEASE [CLICK HERE](#).

---

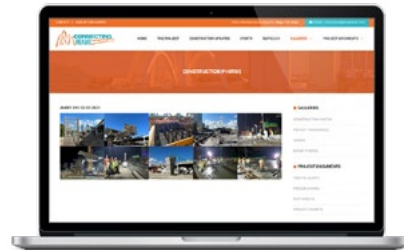
## ABOUT THE PROJECT

The I-395/SR 836/I-95 Design-Build Project will add capacity, enhance the flow of traffic and safety and improve access along I-395, SR 836 and I-95.



To view a video of the project,  
please visit:

[i395-miami.com/project-video](http://i395-miami.com/project-video)



To view updated project photos,  
please visit:

[i395-miami.com/construction-photos](http://i395-miami.com/construction-photos)

---

*Continue reading on the next page...*



---

**Please note that this schedule may change due to bad weather or other unforeseen conditions.**

The work is part of the I-395/SR 836/I-95 Design-Build Project that will reconstruct the I-395 corridor from the SR 836/I-395/I-95 (Midtown) Interchange to the MacArthur Causeway Bridge, including the construction of a Signature Bridge over NE 2 Avenue and Biscayne Boulevard; double-deck SR 836 from west of NW 17 Avenue to the Midtown Interchange and the replacement of the concrete pavement on I-95 from NW 8 Street to NW 29 Street.

For additional information on the project please contact Oscar Gonzalez at 786-280-0983 or via email at [ogonzalez@mrgmiami.com](mailto:ogonzalez@mrgmiami.com). Additional project information can be found on the project website, [www.I-395miami.com](http://www.I-395miami.com).

---

For information on scheduled lane closures on FDOT Construction Projects that affect traffic to/from and in Miami Beach, please [click here](#).