



I-395/SR 836/I-95 DESIGN-BUILD PROJECT

Financial Project Numbers: 251688-1-52-01, 423126-1-52-01, 423126-2-52-01, 429300-2-52-01

05-24-2023

WEEKLY PROJECT UPDATE

NOTE: CONSTRUCTION RELATED CLOSURES WILL BE SUSPENDED STARTING FRIDAY EVENING, MAY 26 UNTIL TUESDAY MORNING, MAY 30 FOR THE MEMORIAL DAY HOLIDAY.

I-95 ONGOING CONSTRUCTION ACTIVITIES

- Nighttime concrete pavement replacement on I-95 from NW 8 Street to NW 17 Street
- Installation of Intelligent Transportation System devices
- Installation of new guardrail
- Traffic railing retrofit on several bridges

I-95 LANE CLOSURES

- **WEDNESDAY, MAY 24, THURSDAY, MAY 25 AND TUESDAY, MAY 30 THROUGH FRIDAY, JUNE 2**
- Up to four lanes on southbound I-95 from NW 29 Street to NW 8 Street will be closed as needed between the hours of 9 p.m. and 5:30 a.m. Closure on Friday will be implemented between the hours of 11 p.m. and 11 a.m.
- **WEDNESDAY, MAY 24, THURSDAY, MAY 25 AND TUESDAY, MAY 30 THROUGH FRIDAY, JUNE 2**
- Up to four lanes on northbound I-95 will be closed as needed from NW 8 Street to NW 29 Street between the hours of 9 p.m. and 5:30 a.m. Closure on Friday will be implemented between the hours of 11 p.m. and 11 a.m.

NORTHBOUND I-95 RAMP TO EASTBOUND I-395 DETOUR

- **WEDNESDAY, MAY 24** - The northbound I-95 ramp to eastbound I-395 will be closed between the hours of 11:45 p.m. and 5:30 a.m. Drivers can:
 - Exit at the NW 2 Street ramp (Exit 2B)
 - Continue north on NW 3 Avenue, then turn right on NW 8 Street
 - Continue east on NW/NE 8 Street
 - Turn left on Biscayne Boulevard to access A1A North/Miami Beach

TO VIEW A MAP OF THE DETOUR PLEASE [CLICK HERE.](#)

Continue reading on the next page...

CLOSURE OF NW 17 STREET UNDER I-95

TUESDAY, MAY 30 THROUGH FRIDAY, JUNE 2 - NW 17 Street will be closed from NW 5 Avenue to NW 7 Avenue between the hours of 9 p.m. and 6 a.m. Drivers can use NW 20 Street as an alternate route.

I-395 ONGOING CONSTRUCTION ACTIVITIES



Installation of a precast arch segment for the I-395 signature bridge just west of NE 2 Avenue

Continue reading on the next page...

- Construction of a temporary westbound and eastbound I-395 bypass from North Miami Avenue to I-95
- Installation of arch segments for the signature bridge
- Construction of arch foundations east of Biscayne Boulevard
- Construction of an elevated temporary roadway at the Biscayne Boulevard ramp to the MacArthur Causeway
- Demolition of median section of I-395 over Biscayne Boulevard for a future traffic shift
- Nighttime Auger Cast Pile installation for support tower foundations from east of Biscayne Boulevard to NE 1 Avenue between I-395 and NE 13 Street
- Ongoing work at four of the six signature bridge arches including placement of precast arch segments at arch two located just west of NE 2 Avenue
- Preparation for the next concrete pour at the signature bridge center pier foundation located between Biscayne Boulevard and NE 2 Avenue just north of I-395
- Construction of foundations for temporary arch support towers along Biscayne Boulevard
- Nighttime roadway operations on I-395 from MacArthur Causeway to I-95

I-395 MAINLINE LANE CLOSURES

- **WEDNESDAY, MAY 24, THURSDAY, MAY 25 AND TUESDAY, MAY 30 THROUGH FRIDAY, JUNE 2** - One lane on mainline eastbound I-395 will be closed as needed from I-95 to Biscayne Boulevard between the hours of 10 p.m. and 5:30 a.m.
- **WEDNESDAY, MAY 24, THURSDAY, MAY 25 AND TUESDAY, MAY 30 THROUGH FRIDAY, JUNE 2** - Up to two lanes on mainline westbound I-395 will be closed as needed from Biscayne Boulevard to I-95 between the hours of 10 p.m. and 5:30 a.m.

WESTBOUND I-395 RAMP TO NORTHBOUND I-95 DETOUR

- **TUESDAY, MAY 30 THROUGH FRIDAY, JUNE 2** - The westbound I-395 ramp to northbound I-95 will be closed between the hours of 10 p.m. and 5:30 a.m. Drivers can:
 - Access the southbound I-95 ramp
 - Exit at SW 7 Street/Brickell Avenue (Exit 1B), then turn left at SW 8 Street
 - Enter the northbound I-95 ramp, then continue north on I-95

TO VIEW A MAP OF THE DETOUR PLEASE [CLICK HERE.](#)

WESTBOUND I-395 RAMP TO SOUTHBOUND I-95 DETOUR

- **TUESDAY, MAY 30 THROUGH FRIDAY, JUNE 2** - The westbound I-395 ramp to southbound I-95 will be closed between the hours of 10 p.m. and 5:30 a.m. Drivers can:
 - Go north on I-95, then exit at NW 62 Street
 - Turn left at NW 62 Street to access the southbound I-95 ramp

TO VIEW A MAP OF THE DETOUR PLEASE [CLICK HERE.](#)

NOTE: THE WESTBOUND I-395 RAMPS TO NORTHBOUND AND SOUTHBOUND I-95 WILL NOT BE CLOSED AT THE SAME TIME. THE CLOSURES WILL BE STAGGERED.

Continue reading on the next page...

CLOSURE OF THE BISCAYNE BOULEVARD RAMP TO THE MACARTHUR CAUSEWAY

- **WEDNESDAY, MAY 24 (THURSDAY, MAY 25 IS AN ALTERNATE DATE)** - The Biscayne Boulevard ramp to eastbound MacArthur Causeway will be closed between the hours of 11 p.m. and 5:30 a.m. on Wednesday. Drivers can:
 - Go north on Biscayne Boulevard
 - Turn right at NW 36 Street to access I-195/Julia Tuttle Causeway
 - Continue east on I-195/Julia Tuttle Causeway to access Alton Road

TO VIEW A MAP OF THE DETOUR PLEASE [CLICK HERE.](#)

CLOSURE OF WESTBOUND MACARTHUR CAUSEWAY RAMP TO BISCAYNE BOULEVARD

- **THURSDAY, MAY 25 (TUESDAY, MAY 30 IS AN ALTERNATE DATE)** - The westbound MacArthur Causeway ramp to Biscayne Boulevard will be closed between the hours of 11 p.m. and 5:30 a.m. to move a crane across the roadway and work on drainage. Drivers can:
 - Continue west on I-395, then access the southbound I-95 ramp
 - Exit at SW 7 Street/Brickell Avenue (Exit 1B), then turn left at SW 8 Street
 - Enter the northbound I-95 ramp, then continue north on I-95 from the right lane
 - Enter the eastbound I-395 ramp and exit at the Biscayne Boulevard/Arena ramp (Exit 2B)

TO VIEW A MAP OF THE DETOUR PLEASE [CLICK HERE.](#)

NW 3 AVENUE DETOUR

- **WEDNESDAY, MAY 24, THURSDAY, MAY 25 AND TUESDAY, MAY 30 THROUGH FRIDAY, JUNE 2** - NW 3 Avenue will be closed as needed from NW 14 Street to NW 14 Terrace between the hours of 10 p.m. and 5:30 a.m.
 - Drivers on northbound NW 3 Avenue can:
 - Turn right on NW 14 Street, then turn left on NW 1 Place
 - Turn left on NW 15 Street, then turn left on NW 2 Avenue
 - Turn right on NW 14 Terrace to connect with NW 3 Avenue
 - Drivers on southbound NW 3 Avenue can:
 - Turn left on NW 14 Terrace, then turn left on NW 2 Avenue
 - Turn right on NW 15 Street, then turn right on NW 1 Court
 - Turn right on NW 14 Street to connect with NW 3 Avenue

TO VIEW A MAP OF THE DETOUR PLEASE [CLICK HERE.](#)

Continue reading on the next page...

CLOSURE OF NW 14 TERRACE

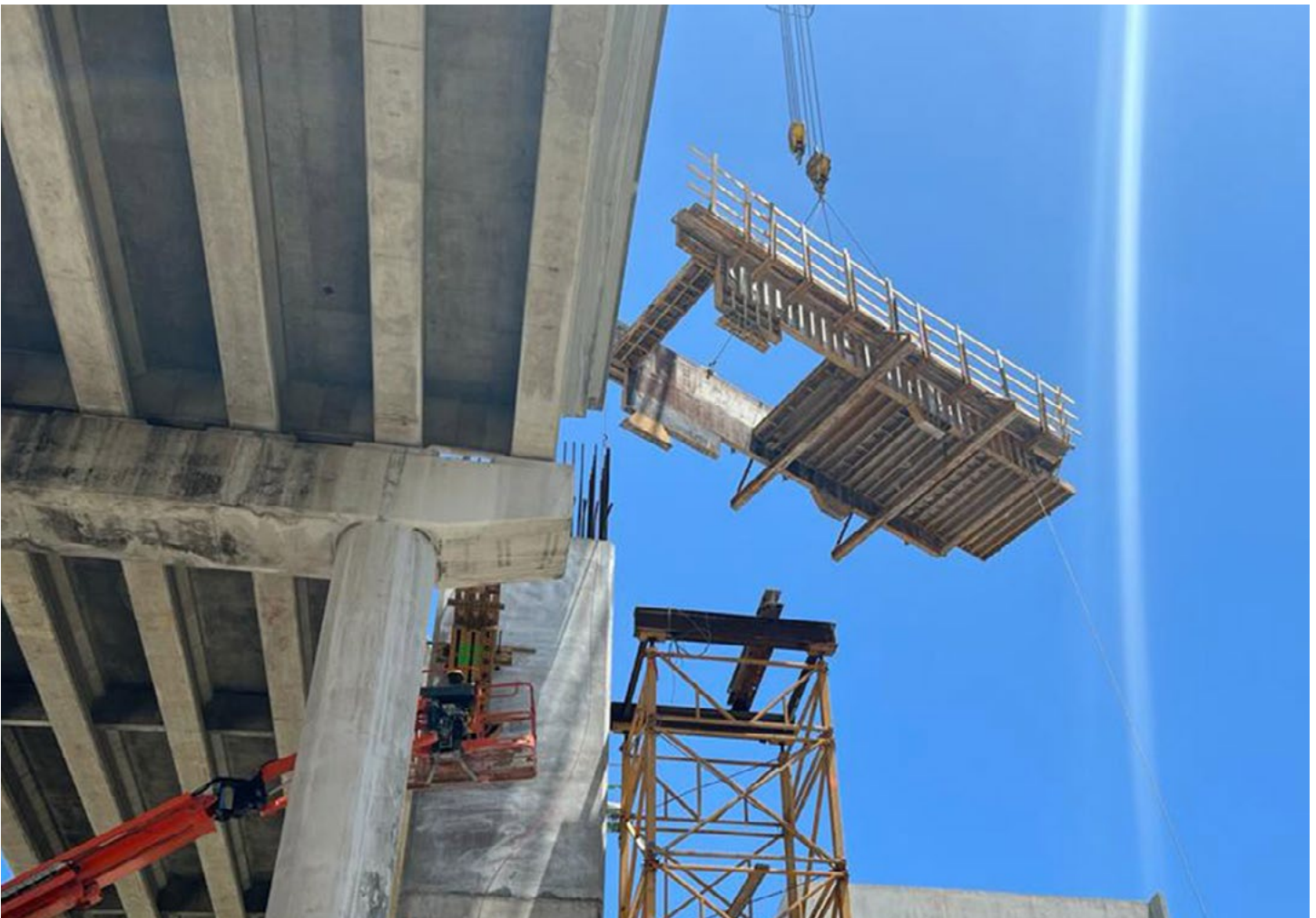
- NW 14 Terrace will be closed from NW 3 Avenue to NW 2 Avenue until further notice to allow the contractor to construct bridge foundations. Drivers can use NW 15 Street as an alternate.

LONG-TERM CLOSURE OF NW 1 COURT

- NW 1 Court from NW 13 Street to NW 14 Street and NW 13 Street from NW 1 Avenue to NW 1 Court will remain continuously closed until further notice to allow the contractor to work on bridges over the roadways.

TO VIEW A MAP OF THE DETOUR PLEASE [CLICK HERE](#)

SR 836 ONGOING CONSTRUCTION ACTIVITIES



Installation of pier cap formwork for new SR 836 bridge at the core of the SR 836/I-95/I-395 Interchange

Continue reading on the next page...

- Installation of SR 836 bridge pier cap segments and beams for the double decked roadway using the overhead lifter
- Bridge widening activities on eastbound SR 836 over NW 14 Street and NW 10 Avenue
- Construction of trestle bridge in the Miami River east bank between the shoreline and the fendering system
- Drilled shaft foundation construction activities in the Miami River west bank between the shoreline and the fendering system
- Pier construction at the Richard E. Gerstein Justice Building parking area
- Ongoing casting of bridge caps
- Construction of double decked piers at the core of the interchange

SR 836 LANE CLOSURES

- **WEDNESDAY, MAY 24, THURSDAY, MAY 25 AND TUESDAY, MAY 30 THROUGH FRIDAY, JUNE 2** - Two eastbound lanes on SR 836 from NW 17 Avenue to I-95 will be closed as needed for bridge work between the hours of 9 p.m. and 5:30 a.m.
- **WEDNESDAY, MAY 24, THURSDAY, MAY 25 AND TUESDAY, MAY 30 THROUGH FRIDAY, JUNE 2** - Two westbound lanes on SR 836 from I-95 to NW 17 Avenue will be closed as needed for bridge work between the hours of 9 p.m. and 5:30 a.m.

EASTBOUND SR 836 RAMP TO NORTHBOUND I-95 DETOUR

- **TUESDAY, MAY 30 THROUGH FRIDAY, JUNE 2** - The eastbound SR 836 ramp to northbound I-95 will be closed as needed between the hours of 9 p.m. and 5:30 a.m. Drivers can:
 - Access the southbound I-95/NW 8 Street ramp, then exit at the NW 8 Street/PortMiami ramp
 - Turn left at NW 8 Street
 - Turn left at NW 3 Avenue to access the northbound I-95 ramp

TO VIEW A MAP OF THE DETOUR PLEASE [CLICK HERE.](#)

EASTBOUND SR 836 RAMP TO SOUTHBOUND I-95 DETOUR

- **WEDNESDAY, MAY 24 AND TUESDAY, MAY 30 THROUGH FRIDAY, JUNE 2** - The eastbound SR 836 ramp to southbound I-95 will be closed as needed between the hours of 10 p.m. and 5:30 a.m. Drivers can:
 - Continue east on I-395
 - Exit at NE 2 Avenue/Biscayne Boulevard (Exit 2A)
 - Turn right on NE 2 Avenue, then turn right on NE 11 Street
 - Turn right on NE 1 Avenue to access the I-95 south ramp

TO VIEW A MAP OF THE DETOUR PLEASE [CLICK HERE.](#)

NOTE: THE SR 836 EASTBOUND RAMPS TO NORTHBOUND AND SOUTHBOUND I-95 WILL NOT BE CLOSED AT THE SAME TIME. THE CLOSURES WILL BE STAGGERED.

Continue reading on the next page...

NW 14 STREET CLOSURE

- **WEDNESDAY, MAY 24, THURSDAY, MAY 25 AND TUESDAY, MAY 30 THROUGH FRIDAY, JUNE 2** - NW 14 Street will be closed from NW 7 Avenue to NW 10 Avenue between the hours of 9 p.m. and 5:30 a.m.
 - Drivers on westbound NW 14 Street can:
 - Turn right on NW 7 Avenue, then turn left on NW 17 Street
 - Turn left on NW 9 Avenue and follow NW 10 Avenue to connect with NW 14 Street
 - Drivers on eastbound NW 14 Street can:
 - Turn left on NW 10 Avenue and follow NW 9 Avenue, then turn right on NW 17 Street
 - Turn right on NW 7 Avenue to connect with NW 14 Street

TO VIEW A MAP OF THE DETOUR PLEASE [CLICK HERE.](#)

NW 10 AVENUE DETOUR

- **WEDNESDAY, MAY 24, THURSDAY, MAY 25 AND TUESDAY, MAY 30 THROUGH FRIDAY, JUNE 2** - NW 10 Avenue will be closed as needed from NW 13 Street to NW 14 Street starting between the hours of 9 p.m. and 5:30 a.m.
 - Northbound drivers on NW 10 Avenue can:
 - Go east on NW 13 Street
 - Turn left on NW 8 Avenue
 - Turn left on NW 14 Street to connect with NW 10 Avenue
 - Southbound drivers on NW 10 Avenue can:
 - Go east on NW 14 Street
 - Turn right on NW 8 Court
 - Turn right on NW 13 Street to access NW 10 Avenue

TO VIEW A MAP OF THE DETOUR PLEASE [CLICK HERE.](#)

NOTE: NW 10 AVENUE AND NW 14 STREET WILL NOT BE CLOSED AT THE SAME TIME. THE CLOSURES WILL BE STAGGERED.

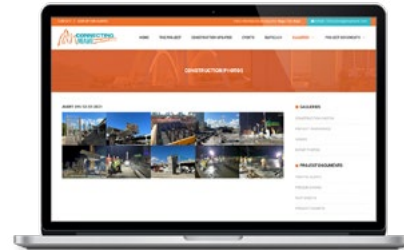
Continue reading on the next page...

ABOUT THE PROJECT

The I-395/SR 836/I-95 Design-Build Project will add capacity, enhance the flow of traffic and safety and improve access along I-395, SR 836 and I-95.



To view a video of the project,
please visit:
i395-miami.com/project-video



To view updated project photos,
please visit:
i395-miami.com/construction-photos

Please note that this schedule may change due to bad weather or other unforeseen conditions.

The work is part of the I-395/SR 836/I-95 Design-Build Project that will reconstruct the I-395 corridor from the SR 836/I-395/I-95 (Midtown) Interchange to the MacArthur Causeway Bridge, including the construction of a Signature Bridge over NE 2 Avenue and Biscayne Boulevard; double-deck SR 836 from west of NW 17 Avenue to the Midtown Interchange and the replacement of the concrete pavement on I-95 from NW 8 Street to NW 29 Street.

For additional information on the project please contact Oscar Gonzalez at 786-280-0983 or via email at ogonzalez@mrgmiami.com. Additional project information can be found on the project website, www.I-395miami.com.

For information on scheduled lane closures on FDOT Construction Projects that affect traffic to/from and in Miami Beach, please [click here](#).